

# STRIPES 4



HEADQUARTERS WELS  
Office & Showroom  
4600 Wels, Austria  
Europastrasse 45  
T: +43 7242 698-0  
F: +43 7242 60376  
M: office@moltoluce.com

[www.moltoluce.com](http://www.moltoluce.com)



V\_0\_001

MOLTO LUCE®

**PREMIUM LED STRIPES**



PREMIUM STRIPES 08-09

**BASIC LED STRIPES INDOOR**



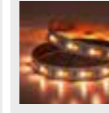
BASIC WHITE STRIPES 12-15



LED STRIPES DIM2WARM 16



LED STRIPES TUNABLE W 17



BASIC RGB/W STRIPES 20-21

**BASIC LED STRIPES OUTDOOR**



BASIC WHITE STRIPES IP67 24



LED STRIPES TUNABLE W 25



BASIC 48V STRIPES IP67 26-27



BASIC RGB/W STRIPES IP67 28-29

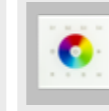
**PROFILES AND ACCESSORIES**



PROFILES 30-39



CONVERTER 40-43



CONTROLLER 41-43

**LEGEND**

**w** white

**s** silver

**w0** opal white

**s** black

**e** stainless steel

**s0** opal black

**ae** aluminium anodized

**an** aluminium nature

**k** transparent



Our LED stripes are now ready to ship by the roll within 24h!



Order now in the webshop:



**Attention: Our 24h READY TO DELIVER offer is valid for the EU area!**



Project: Kurhotel Marienkron, Austria  
Photo: Fotografie Gabriel Buechelmeier  
Product: PREMIUM LED STRIPE



Project: Karriere.at, Linz, Austria  
Photo: Molto Luce  
Product: BASIC LED RGB STRIPE



Project: Truckcenter Katzinger, Altenfelden, Austria  
Photo: Leibez Interieur Design Photo: Stöbich  
Product: PREMIUM LED STRIPE



Project: Pfeffermühle, Austria  
Photo: Tischlerei Kotrasch  
Product: PREMIUM LED STRIPE

**PREMIUM LED STRIPES IP65**



Power: 5; 9; 18 oder 28W/M  
 Light colours: 2500; 2700; 3000 or 4000K  
 MacAdam 3Step Binning  
 CRI>90

Info: page 08-09

**BASIC LED STRIPES IP20**



Power: 4.8; 9.6 oder 14.4W/M  
 Light colours: 3000 or 4000K  
 MacAdam 3Step Binning  
 CRI>80

Info: page 12-15

**LED STRIPES DIM2WARM IP20**



Power: 14.4W/M  
 Light colours: 3000-2200K or 2700-2200K  
 MacAdam 5Step Binning  
 CRI>80

Info: page 16

**BASIC LED STRIPES IP67**



Power: 4.8 oder 14.4W/M  
 Light colours: 3000 or 4000K  
 MacAdam 3Step Binning  
 CRI>80

Info: page 24

**LED STRIPES TUNABLE WHITE IP67**



Power: 14.4W/M  
 Light colours: 2700 - 6500K  
 MacAdam 5Step Binning

Info: page 25

**BASIC 48V LED STRIPES IP67**



Power: 4.8W/M  
 Light colours: 3000 or 4000K  
 MacAdam 5Step Binning  
 CRI>80

Info: page 26-27

**LED STRIPES TUNABLE WHITE IP20**



Power: 14.4W/M  
 Light colours: 2700 - 6500K  
 MacAdam 5Step Binning

Info: page 17

**BASIC LED STRIPES RGB-W IP20**



Power: 18.1W/M  
 Light colours: RGB / W3000K  
 MacAdam 3Step Binning

Info: page 20

**BASIC LED STRIPES RGB-W IP67**



Power: 18.1W/M  
 Light colours: RGB / W3000K  
 MacAdam 3Step Binning

Info: page 28-29

## PREMIUM LED STRIPES IP65



## PREMIUM LED STRIPE 5W/M 10M ROLL OR SOLD BY METER

INFO	POWER	V DC	LUMEN / M	CRI	LED	L	W	H	PACKAGE	CODE
Flexible PREMIUM LED stripe, IP65, by plasma coating, sold by meter, 120 LEDs/m, 5W per meter, separable each 5 cm, fixing with double-sided adhesive tape 3M, without converter, in order to guarantee a long service life and perfect functioning of the LED stripes, they must be mounted on heat conducting material! Price quotation without cut to size!	LED 5W/m	24	440	>90	2500K	10m	5	1,4	Roll	<b>283-240565uuww</b>
	LED 5W/m	24	470	>90	2700K	10m	5	1,4	Roll	<b>283-240565uww</b>
	LED 5W/m	24	520	>90	3000K	10m	5	1,4	Roll	<b>283-240565ww</b>
	LED 5W/m	24	580	>90	4000K	10m	5	1,4	Roll	<b>283-240565nw</b>
Please calculate per cut 1x <b>283-konf</b> additionally.	LED 5W/m	24	440	>90	2500K	your order	5	1,4	per meter	<b>283-240565uuwwkonf</b>
	LED 5W/m	24	470	>90	2700K	your order	5	1,4	per meter	<b>283-240565uwwkonf</b>
	LED 5W/m	24	520	>90	3000K	your order	5	1,4	per meter	<b>283-240565wwkonf</b>
	LED 5W/m	24	580	>90	4000K	your order	5	1,4	per meter	<b>283-240565nwwkonf</b>
<b>ATTENTION:</b> Maximum length per feed point 5m										

## PREMIUM LED STRIPE 9W/M 30M ROLL OR SOLD BY METER

INFO	POWER	V DC	LUMEN / M	CRI	LED	L	W	H	PACKAGE	CODE
Flexible PREMIUM LED stripe, IP65, by plasma coating, sold by meter, 120 LEDs/m, 9W / meter, separable each 5 cm, fixing with double-sided adhesive tape 3M, without converter, in order to guarantee a long service life and perfect functioning of the LED stripes, they must be mounted on heat conducting material! Price quotation without cut to size!	LED 9W/m	24	950	>90	2500K	30m	8	1,4	Roll	<b>283-240965uuww</b>
	LED 9W/m	24	1054	>90	2700K	30m	8	1,4	Roll	<b>283-240965uww</b>
	LED 9W/m	24	1058	>90	3000K	30m	8	1,4	Roll	<b>283-240965ww</b>
	LED 9W/m	24	1134	>90	4000K	30m	8	1,4	Roll	<b>283-240965nw</b>
Please calculate per cut 1x <b>283-konf</b> additionally.	LED 9W/m	24	950	>90	2500K	your order	8	1,4	per meter	<b>283-240965uuwwkonf</b>
	LED 9W/m	24	1054	>90	2700K	your order	8	1,4	per meter	<b>283-240965uwwkonf</b>
	LED 9W/m	24	1058	>90	3000K	your order	8	1,4	per meter	<b>283-240965wwkonf</b>
	LED 9W/m	24	1134	>90	4000K	your order	8	1,4	per meter	<b>283-240965nwwkonf</b>
<b>ATTENTION:</b> Maximum length per feed point 10m										

## PREMIUM LED STRIPE 18W/M 30M ROLL OR SOLD BY METER

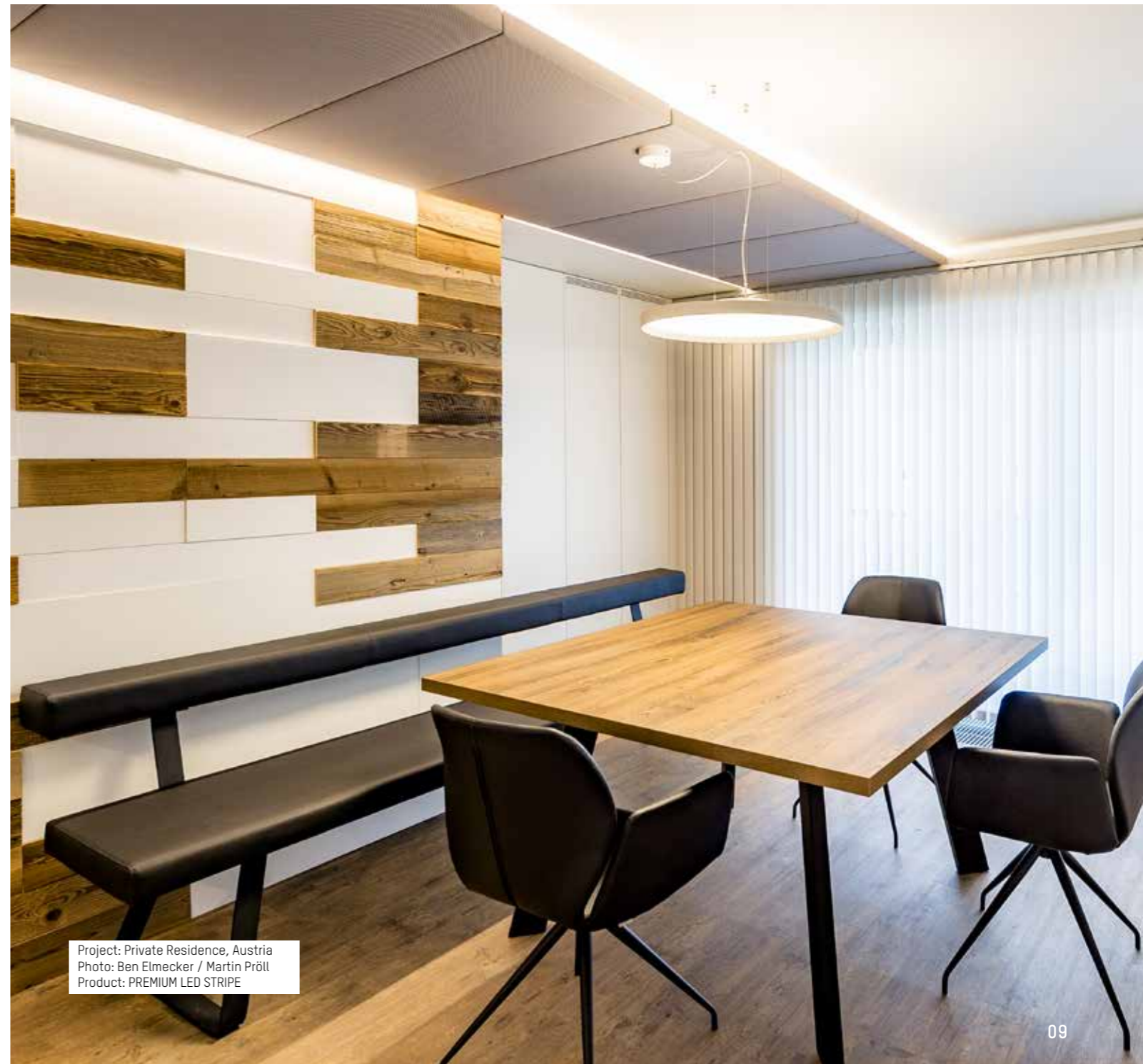
INFO	POWER	V DC	LUMEN / M	CRI	LED	L	W	H	PACKAGE	CODE
Flexible PREMIUM LED stripe, IP65, by plasma coating, sold by meter, 120 LEDs/m, 18W / meter, separable each 5 cm, fixing with double-sided adhesive tape 3M, without converter, in order to guarantee a long service life and perfect functioning of the LED stripes, they must be mounted on heat conducting material! Price quotation without cut to size!	LED 18W/m	24	1755	>90	2500K	30m	8	1,4	Roll	<b>283-241865uuww</b>
	LED 18W/m	24	1934	>90	2700K	30m	8	1,4	Roll	<b>283-241865uww</b>
	LED 18W/m	24	1980	>90	3000K	30m	8	1,4	Roll	<b>283-241865ww</b>
	LED 18W/m	24	2148	>90	4000K	30m	8	1,4	Roll	<b>283-241865nw</b>
Please calculate per cut 1x <b>283-konf</b> additionally.	LED 18W/m	24	1755	>90	2500K	your order	8	1,4	per meter	<b>283-241865uuwwkonf</b>
	LED 18W/m	24	1934	>90	2700K	your order	8	1,4	per meter	<b>283-241865uwwkonf</b>
	LED 18W/m	24	1980	>90	3000K	your order	8	1,4	per meter	<b>283-241865wwkonf</b>
	LED 18W/m	24	2148	>90	4000K	your order	8	1,4	per meter	<b>283-241865nwwkonf</b>
<b>ATTENTION:</b> Maximum length per feed point 8m										

## PREMIUM LED STRIPE 28W/M 30M ROLL OR SOLD BY METER

INFO	POWER	V DC	LUMEN / M	CRI	LED	L	W	H	PACKAGE	CODE
Flexible PREMIUM LED stripe, IP65, by plasma coating, sold by meter, 120 LEDs/m, 28W / meter, separable each 5 cm, fixing with double-sided adhesive tape 3M, without converter, in order to guarantee a long service life and perfect functioning of the LED stripes, they must be mounted on heat conducting material! Price quotation without cut to size!	LED 28W/m	24	2500	>90	2500K	30m	8	1,4	Roll	<b>283-242865uuww</b>
	LED 28W/m	24	2890	>90	2700K	30m	8	1,4	Roll	<b>283-242865uww</b>
	LED 28W/m	24	2922	>90	3000K	30m	8	1,4	Roll	<b>283-242865ww</b>
	LED 28W/m	24	3191	>90	4000K	30m	8	1,4	Roll	<b>283-242865nw</b>
Please calculate per cut 1x <b>283-konf</b> additionally.	LED 28W/m	24	2500	>90	2500K	your order	8	1,4	per meter	<b>283-242865uuwwkonf</b>
	LED 28W/m	24	2890	>90	2700K	your order	8	1,4	per meter	<b>283-242865uwwkonf</b>
	LED 28W/m	24	2922	>90	3000K	your order	8	1,4	per meter	<b>283-242865wwkonf</b>
	LED 28W/m	24	3191	>90	4000K	your order	8	1,4	per meter	<b>283-242865nwwkonf</b>
<b>ATTENTION:</b> Maximum length per feed point 4m										

## CONFIGURATION PREMIUM LED STRIPES

INFO	CODE
LED STRIPE IP65 PER CUT CONTAINS: Cut to size, 50cm soldered connection cable, cut seal, system test, ESD packing	<b>283-konf</b>



Project: Private Residence, Austria  
Photo: Ben Elmecker / Martin Pröll  
Product: PREMIUM LED STRIPE



Project: Private Residence, Austria  
Photo: Gabriel Büchelmeier  
Product: BASIC LED STRIPE

## BASIC LED STRIPES IP20



### BASIC LED STRIPE 4,8W/M ROLL 5 M OR SOLD BY METER

INFO	POWER	V DC	LUMEN / M	CRI	LED	L	W	H	PACKAGE	CODE
Flexible BASIC LED stripe, roll 5000mm, 300 SMD3528 LEDs, 60 LEDs / meter, 4,8W / meter, separable each 6 LEDs (ca. 10cm), fixing with double-sided adhesive tape 3M, without converter,  <b>ATTENTION:</b> No resistance to chemical substances or vapours (e.g. chlorine and similar). In order to guarantee a long service life and perfect functioning of the LED stripes, they must be mounted on heat conducting material!	LED 4,8W/m	24	440	>80	3000K	5m	8	3	Roll	746-1242420ww
	LED 4,8W/m	24	473	>80	4000K	5m	8	3	Roll	746-1242420nw
	LED 4,8W/m	24	440	>80	3000K	your order	8	3	per meter	746-1242420wwkonf
	LED 4,8W/m	24	473	>80	4000K	your order	8	3	per meter	746-1242420nwkonf

Please calculate per cut 1x 746-konfip20 additionally.

**ATTENTION:** Maximum length per feed point 10m

#### ACCESSOIRES



PRODUCT	CODE
FAST POWER FEED incl. 200mm cable	746-fc1220w
FAST CONNECTOR	746-lc1220w
LINEAR CONNECTOR FLEX. incl. 100mm cable	746-lcf1220w

### BASIC LED STRIPE 9,6W/M ROLL 5 M OR SOLD BY METER

INFO	POWER	V DC	LUMEN / M	CRI	LED	L	W	H	PACKAGE	CODE
Flexible BASIC LED stripe, roll 5000mm, 300 SMD3528 LEDs, 60 LEDs / meter, 9,6W / meter, separable each 6 LEDs (ca. 10cm), fixing with double-sided adhesive tape 3M, without converter,  <b>ATTENTION:</b> No resistance to chemical substances or vapours (e.g. chlorine and similar). In order to guarantee a long service life and perfect functioning of the LED stripes, they must be mounted on heat conducting material!	LED 9,6W/m	24	983	>80	3000K	5m	8	3	Roll	746-1244820ww
	LED 9,6W/m	24	1006	>80	4000K	5m	8	3	Roll	746-1244820nw
	LED 9,6W/m	24	983	>80	3000K	your order	8	3	per meter	746-1244820wwkonf
	LED 9,6W/m	24	1006	>80	4000K	your order	8	3	per meter	746-1244820nwkonf

Please calculate per cut 1x 746-konfip20 additionally.

**ATTENTION:** Maximum length per feed point 7m

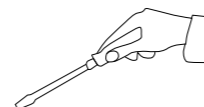
#### ACCESSOIRES



PRODUCT	CODE
FAST POWER FEED incl. 200mm cable	746-fc1220w
FAST CONNECTOR	746-lc1220w
LINEAR CONNECTOR FLEX. incl. 100mm cable	746-lcf1220w

### CONFIGURATION BASIC LED STRIPES IP20

INFO	CODE
LED stripe IP20 per cutting includes: Cutting, 50cm connecting cable soldered, system test, packaging	746-konfip20



Project: Hilton Hotel, TECA Aberdeen, Schottland  
Photo: Paul Zanre  
Product: BASIC LED STRIPE



Project: Private Residence, Austria  
Photo: Molto Luce  
Product: BASIC LED STRIPE



Project: Peffermühle, Austria  
Photo: Tischlerei Kotrasch  
Product: BASIC LED STRIPE

## BASIC LED STRIPES IP20



### BASIC LED STRIPE 14,4W/M ROLL 5 M OR SOLD BY M

INFO	POWER	V DC	LUMEN / M	CRI	LED	L	W	H	PACKAGE	CODE
Flexible BASIC LED stripe, roll 5000mm, 300 SMD5060 LEDs, 60 LEDs / meter, 14,4W / meter, separable each 6 LEDs (ca. 10cm), fixing with double-sided adhesive tape 3M, without converter,	LED 14,4W/m	24	1395	>80	3000K	5m	12	4	Roll	746-1247220ww
	LED 14,4W/m	24	1475	>80	4000K	5m	12	4	Roll	746-1247220nw

**ATTENTION:** No resistance to chemical substances or vapours (e.g. chlorine and similar). In order to guarantee a long service life and perfect functioning of the LED stripes, they must be mounted on heat conducting material!

LED 14,4W/m	24	1395	>80	3000K	your order	12	4	per meter	746-1247220wkonf
LED 14,4W/m	24	1475	>80	4000K	your order	12	4	per meter	746-1247220nwkonf

Please calculate per cut 1x 746-konfip20 additionally.



**ATTENTION:** Maximum length per feed point 5m

ACCESSOIRES	PRODUCT	CODE
	FAST POWER FEED incl. 200mm cable	746-fc2420w
	FAST CONNECTOR	746-lc2420w
	LINEAR CONNECTOR FLEX. incl. 100mm cable	746-lcf2420w

### CONFIGURATION BASIC LED STRIPES IP20

INFO	CODE
LED stripe IP20 per cutting includes: Cutting, 50cm connecting cable soldered, system test, packaging	746-konfip20



Project: Private Residence, Austria  
Photo: Interieur Design Leibez  
Product: BASIC LED STRIPE



LED STRIPE DIM2WARM IP20



LED STRIPE TUNABLE WHITE IP20



LED STRIPE DIM2WARM 14,4W/M ROLL 5M

INFO	POWER	V DC	LUMEN / M	CRI	LED	L	W	H	CODE
Flexible BASIC LED stripe, roll 5000mm, 120 SMD2835 LEDs per meter, 14,4W, MacAdam 5 Step Binning, separable each 10cm, fixing with double-sided adhesive tape 3M, without converter	LED 14,4W/m	24	1330	>80	3000K-2200K	5m	12	1,4	746-247220wd2w
	LED 14,4W/m	24	1270	>80	2700K-2200K	5m	12	1,4	746-247220ud2w

**ATTENTION:** No resistance to chemical substances or vapours (e.g. chlorine and similar). In order to guarantee a long service life and perfect functioning of the LED stripes, they must be mounted on heat conducting material!!

**ATTENTION:** Maximum length per feed point 5m

LED STRIPE TUNABLE WHITE 14,4W/M ROLLE 5M

INFO	POWER	V DC	LUMEN / M	CRI	LED	L	W	H	CODE
Flexible BASIC LED stripe, roll 5000mm, 120 SMD2835 LEDs per meter, 14,4W, MacAdam 5 Step Binning, separable each 10cm, fixing with double-sided adhesive tape 3M, without converter	LED 14,4W/m	24	2700K - 736lm	>80	2700K-6500K	5m	10	1,4	746-241420tw
			6500K - 782lm						

**ATTENTION:** No resistance to chemical substances or vapours (e.g. chlorine and similar). In order to guarantee a long service life and perfect functioning of the LED stripes, they must be mounted on heat conducting material!!

**ATTENTION:** Maximum length per feed point 5m



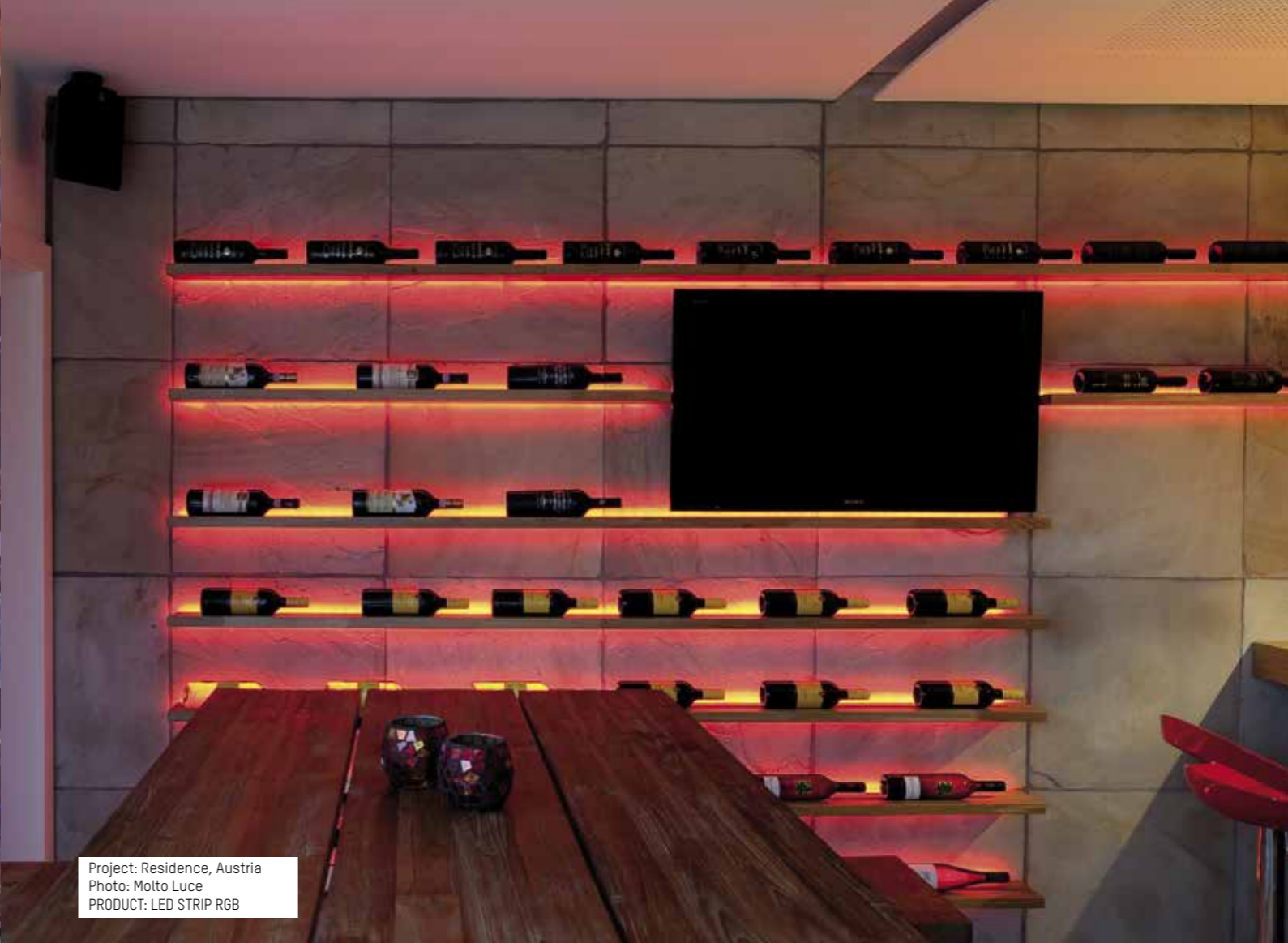
Project: Hotel Almlust, Flachau, Austria  
 Photo: Hotel Almlust  
 Product: BASIC LED STRIPE



Project: Private Residence, Austria  
 Product: BASIC LED STRIPE



Project: Restaurant OX, Plus City Pasching, Austria  
Photo: LSD  
PRODUCT: LED STRIP RGB



Project: Residence, Austria  
Photo: Molto Luce  
PRODUCT: LED STRIP RGB



Project: Hotel Flachauerhof, Austria  
PRODUCT: LED STRIP RGB/W

**BASIC LED STRIPE IP20**



**BASIC LED STRIPE RGB W 18,1W/M ROLL 5M**

INFO	POWER	V DC	LUMEN / M	CRI	LED	L	W	H	CODE
Flexible BASIC LED stripe RGB-W, roll 5000mm, 480 SMD LEDs, 48 SMD RGB 5050 LEDs/meter, 48 SMD2835 LEDs / meter, 18,1W / meter, separable each 12 LEDs (ca. 13cm), fixing with double-sided adhesive tape 3M, without converter	LED 18,1W/m	24	101 RED 279 GREEN 65 BLUE 428 WHITE	----	RGB 3000K	5m	12	2,5	746-1249120rgbw

**ATTENTION:** No resistance to chemical substances or vapours (e.g. chlorine and similar). In order to guarantee a long service life and perfect functioning of the LED stripes, they must be mounted on heat conducting material!

**ATTENTION:** Maximum length per feed point 5m



Project: Kreisel Electric, Austria  
 Planing: Ben Elmecker  
 Photo: Martin Pröll  
 Product: BASIC LED STRIPE RGB-W



Project: Andels Hotel, Lodz, Polen  
 Planing: OP Architects  
 Product: BASIC LED STRIPE RGB-W



Project: Hotel Matschner, Ramsau, Austria  
 Photo: Tischlerei Kotrasch  
 Product: BASIC LED STRIPE RGB-W



Project: ISO CELL, Neumarkt, Austria  
Photo: MOLTO LUCE  
Product: BASIC RGB-W LED STRIPE

## BASIC LED STRIPES IP67



### BASIC LED STRIPE 4,8W/M ROLL 5M

INFO	POWER	V DC	LUMEN / M	CRI	LED	L	W	H	CODE
Flexible BASIC LED stripe, roll 5000mm, 300 SMD5060 LEDs, 60 LEDs / meter, 4,8W / meter, separable each 6 LEDs (ca. 10cm). Stripe must be sealed after separation! fixing with double-sided adhesive tape 3M, with DC plug and 2 sockets, without converter	LED 4,8W/m	24	350	>80	3000K	5m	10	4	746-1242467ww
	LED 4,8W/m	24	370	>80	4000K	5m	10	4	746-1242467nw

**ATTENTION:** No resistance to chemical substances or vapours (e.g. chlorine and similar). In order to guarantee a long service life and perfect functioning of the LED stripes, they must be mounted on heat conducting material!

**ATTENTION:** Maximum length per feed point 5m

#### ACCESSORIES



order separately

PRODUCT	CODE
SILICON END CAP	746-1003
SHRINK TUBE	746-1004
FEED IN COVER	746-1101
DC PLUG incl. 130mm cable	746-1100
DC SOCKET incl. 130mm cable	746-1200

### BASIC LED STRIPE 14,4W/M ROLL 5M

INFO	POWER	V DC	LUMEN / M	CRI	LED	L	W	H	CODE
Flexible BASIC LED stripe, roll 5000mm, 300 SMD5060 LEDs, 60 LEDs / meter, 14,4W / meter, separable each 6 LEDs (ca. 10cm). Stripe must be sealed after separation! fixing with double-sided adhesive tape 3M, with DC plug and 2 sockets, without converter	LED 14,4W/m	24	1090	>80	3000K	5m	14,2	4	746-2247267ww
	LED 14,4W/m	24	1130	>80	4000K	5m	14,2	4	746-1247267nw

**ATTENTION:** No resistance to chemical substances or vapours (e.g. chlorine and similar). In order to guarantee a long service life and perfect functioning of the LED stripes, they must be mounted on heat conducting material!

**ATTENTION:** Maximum length per feed point 5m

#### ACCESSORIES



order separately

PRODUCT	CODE
SILICON END CAP	746-1001
SHRINK TUBE	746-1004
FEED IN COVER	746-1101
DC PLUG incl. 130mm cable	746-1100
DC SOCKET incl. 130mm cable	746-1200

## LED STRIPE TUNABLE WHITE IP67



### LED STRIPE TUNABLE WHITE 14,4W/M ROLL 5M

INFO	POWER	V DC	LUMEN / M	CRI	LED	L	W	H	CODE
Flexible BASIC LED stripe, roll 5000mm, 300 SMD2835 LEDs, 120 LEDs / meter, 14,4W / meter, separable each 6 LEDs (ca. 10cm). Stripe must be sealed after separation! fixing with double-sided adhesive tape 3M, with DC plug and 2 sockets, without converter	LED 14,4W/m	24	2700K - 519lm	>80	2700K-6500K	5m	12	5,5	746-241467tw
			6500K - 526lm						

**ATTENTION:** No resistance to chemical substances or vapours (e.g. chlorine and similar). In order to guarantee a long service life and perfect functioning of the LED stripes, they must be mounted on heat conducting material!

**ATTENTION:** Maximum length per feed point 5m

#### ACCESSORIES



order separately

PRODUCT	CODE
SILICON END CAP	746-1003
SHRINK TUBE	746-1004
FEED IN COVER	746-1101



Project: Kreisel Electric, Austria  
Planung / Umsetzung: Ben Elmecker  
Photo: Martin Pröll  
Product: BASIC LED STRIPE IP67

**BASIC 48V LED STRIPE IP67**


**48V**




**BASIC 48V LED STRIPE IP67 4,8W/M ROLL 10M**


INFO	POWER	V DC	LUMEN / M	CRI	LED	L	W	H	CODE
Flexible BASIC LED stripe, 48V supply voltage, roll 10m, 120 LED/m, separable each ca. 10cm. Stripe must be sealed after separation! fixing with double-sided adhesive tape 3M, without converter	LED 4,8Wm	48	418	>80	3000K	10m	14	6	<b>746-484867ww</b>
	LED 4,8Wm	48	418	>80	4000K	10m	14	6	<b>746-484867nw</b>



ACCESSORIES	
	
order separately	
ARTIKEL	CODE
SILICON END CAP	746-1001
SHRINK TUBE	746-1004
FEED IN COVER	746-1101
DC PLUG incl. 130mm cable	746-1100
DC SOCKET incl. 130mm cable	746-1200

CONVERTER 50W SWITCHABLE	INFO	W	V DC	L	W	H	COLOUR	CODE
	Converter for LED Stripes 48V, not dimmable, 230 VAC	50	48	225	60	49	<b>W</b>	<b>24-122766</b>



CONVERTER 150W SWITCHABLE	INFO	W	V DC	L	W	H	COLOUR	CODE
	Converter for LED Stripes 48V, not dimmable, 230 VAC	150	48	240	60	49	<b>W</b>	<b>24-122764</b>



UNIVERSALDIMMER	INFO	V DC	L	W	H	COLOUR	CODE
	Universaldimmer 1 chanel, separate control input for DALI, 1-10V, Push, sync connection for max. 9 slaves by 1-10V or Push control, max. connection: 5A Order strain relief separately	12-50	153	30	21	<b>W</b>	<b>322-ud3000</b>
	STRAIN RELIEF for 1-chanal Universaldimmer, 2 pce.						<b>322-ud7001</b>



**BASIC LED STRIPE RGB/W IP67**



**BASIC LED STRIPE RGB W 18,1W/M ROLL 5M**

INFO	POWER	V DC	LUMEN / M	CRI	LED	L	W	H	CODE
Flexible BASIC LED stripe RGB-W, roll 5000mm, 480 SMD LEDs, 48 SMD RGB 5050 LEDs/meter, 48 SMD2835 LEDs / meter, 18,1W / meter, separable each 12 LEDs (approx. 13cm), Stripe must be sealed after separation! Fixing with double-sided adhesive tape 3M, with DC plug and 2 sockets, without converter,	LED 18,1W/m	24	78 RED 198 GREEN 52 BLUE 294 WHITE	---- >80 (White)	RGB 3000K	5m	15	5,5	746-1249167rgbw

**ATTENTION:** No resistance to chemical substances or vapours (e.g. chlorine and similar). In order to guarantee a long service life and perfect functioning of the LED stripes, they must be mounted on heat conducting material!

**Attention:** Maximum length per feed point 5m



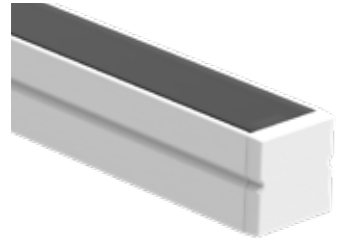
Project: Dorfbahn, Gerlos, Austria  
Photo: Dorfbahn Gerlos  
Product: LED STRIPE RGB-W IP67



Project: Cafe Central, Linz, Austria  
Photo: LSD  
Product: LED STRIPE RGB-W IP67

**SURFACE PROFILES FROM ALUMINIUM FOR LED STRIPES**

**MINI 10 SURFACE**



**MINI 14 SURFACE**



**MINI 17 SURFACE**



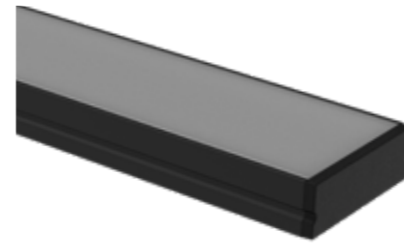
**MIDI SURFACE**



**MAXI SURFACE**



**MEGA SURFACE**



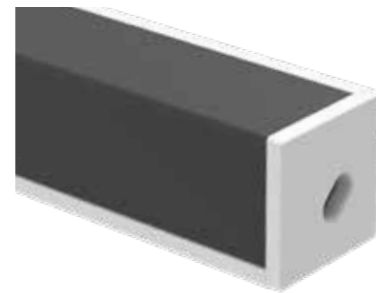
**MINI CORNER SURFACE**



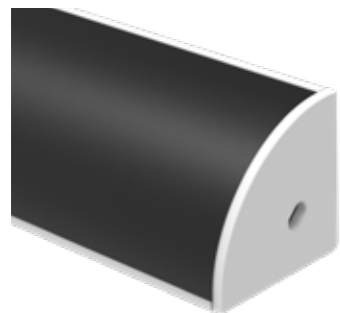
**MIDI CORNER SURFACE**



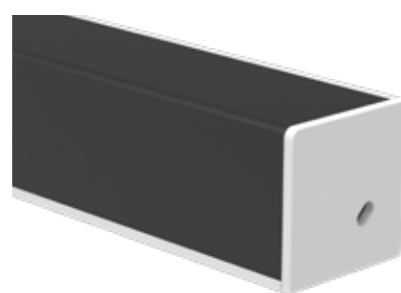
**MIDI CORNER SURFACE**



**MAXI CORNER SURFACE**



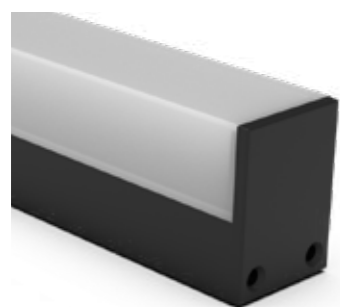
**MAXI CORNER SURFACE**



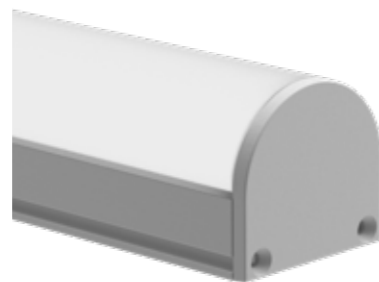
**FLEX SURFACE**



**MIDI CUBE SURFACE**



**MAXI SOFT SURFACE**

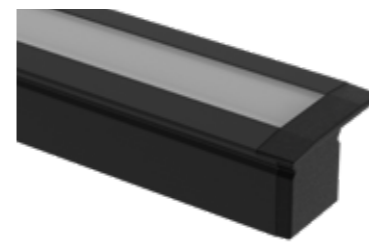


**RIDE SURFACE**

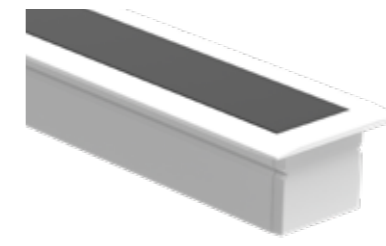


**RECESSED PROFILES FROM ALUMINIUM FOR LED STRIPES**

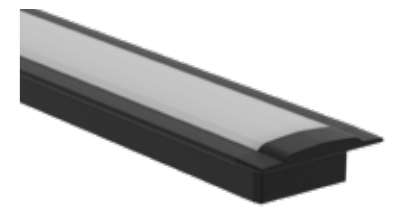
**MINI 10 RECESSED**



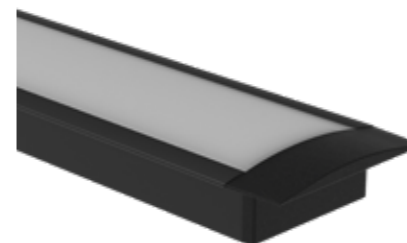
**MINI 14 RECESSED**



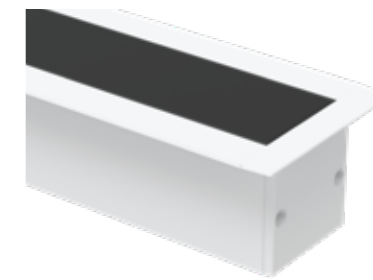
**MINI 17 RECESSED**



**MIDI RECESSED**



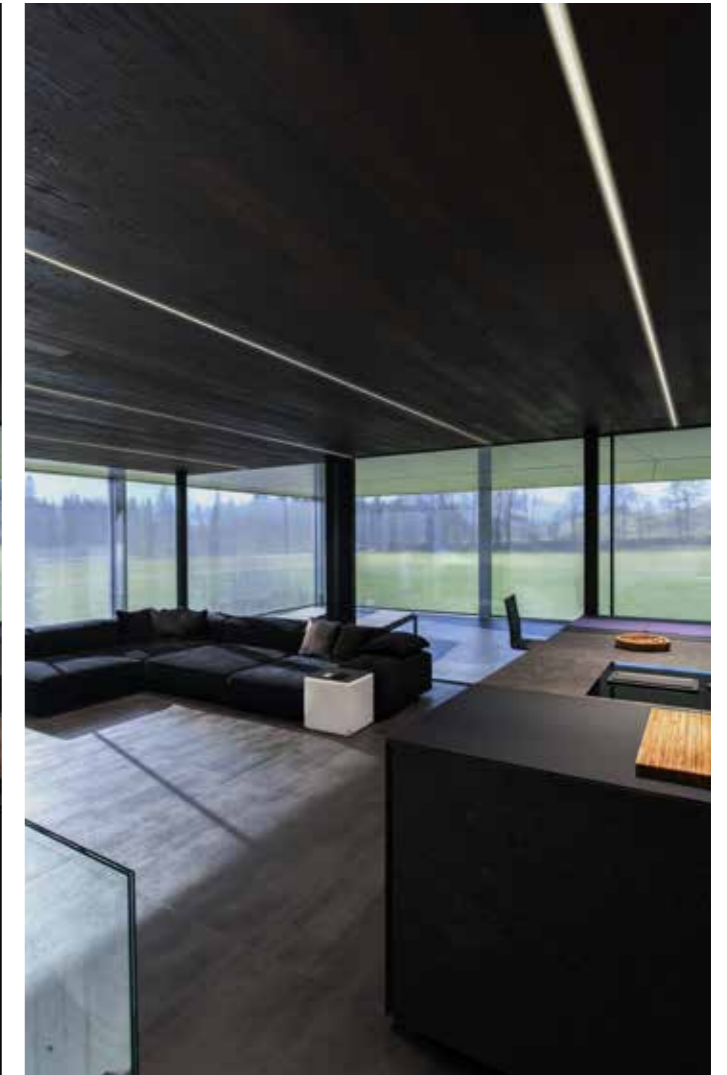
**MAXI RECESSED**



**RIDE RECESSED**



MAXI recessed profile with black satined cover





## SURFACE PROFILES FROM ALUMINIUM FOR LED STRIPES

### MINI 10 SURFACE

DETAIL	PRODUCT	L	W	H	COLOUR	CODE
	PROFILE	2000	10	10	W	600-1a201w
	PROFILE	2000	10	10	S	600-1a201b
	PROFILE	2000	10	10	AE	600-1a201s
	<b>PRODUCT</b>		<b>MATERIAL</b>		<b>COLOUR</b>	<b>CODE</b>
	END CAPS (Set 2 pcs.)	PLASTIC			W	600-1aek201w
	END CAPS (Set 2 pcs.)	PLASTIC			S	600-1aek201b
	END CAPS (Set 2 pcs.)	PLASTIC			S	600-1aek201s
	<b>PRODUCT</b>	<b>MATERIAL</b>			<b>COLOUR</b>	<b>CODE</b>
	COVER	PMMA WHITE SATINED			WO	600-1c201
	COVER	PMMA BLACK SATINED			SO	600-cb201
	<b>PRODUCT</b>	<b>MATERIAL</b>			<b>COLOUR</b>	<b>CODE</b>
	MOUNTING CLIPS (2 Stk.)	STAINLESS STEEL			E	600-mc201

Surface mounted profile MINI 10 for flexible LED stripes up to width 5mm, INFO: for Led stripes up to max. 5 Watt

### MINI 14 SURFACE

DETAIL	PRODUCT	L	W	H	COLOUR	CODE
	PROFILE	2000	14	8	W	600-1a202w
	PROFILE	2000	14	8	S	600-1a202b
	PROFILE	2000	14	8	AE	600-1a202s
	<b>PRODUCT</b>	<b>MATERIAL</b>			<b>COLOUR</b>	<b>CODE</b>
	END CAPS (Set 2 pcs.)	PLASTIC			W	600-1aek202w
	END CAPS (Set 2 pcs.)	PLASTIC			S	600-1aek202b
	END CAPS (Set 2 pcs.)	PLASTIC			S	600-1aek202s
	<b>PRODUCT</b>	<b>MATERIAL</b>			<b>COLOUR</b>	<b>CODE</b>
	COVER	PMMA WHITE SATINED			WO	600-1c202
	COVER	PMMA BLACK SATINED			SO	600-cb202
	<b>PRODUCT</b>	<b>MATERIAL</b>			<b>COLOUR</b>	<b>CODE</b>
	MOUNTING CLIPS (2 Stk.)	STAINLESS STEEL			E	600-amc202

Surface mounted profile MINI 14 for flexible LED stripes up to width 8mm, INFO: for Led stripes up to max. 9 Watt

### MINI 17 SURFACE

DETAIL	PRODUCT	L	W	H	COLOUR	CODE
	PROFILE	2000	17	8,8	W	600-a203w
	PROFILE	2000	17	8,8	S	600-a203b
	PROFILE	2000	17	8,8	AE	600-a203s
	<b>PRODUCT</b>	<b>MATERIAL</b>			<b>COLOUR</b>	<b>CODE</b>
	END CAPS (Set 2 pcs.)	PLASTIC			W	600-aek203w
	END CAPS (Set 2 pcs.)	PLASTIC			S	600-aek203b
	END CAPS (Set 2 pcs.)	PLASTIC			S	600-aek203s
	<b>PRODUCT</b>	<b>MATERIAL</b>			<b>COLOUR</b>	<b>CODE</b>
	COVER	PMMA WHITE SATINED			WO	600-c203
	COVER	PMMA BLACK SATINED			SO	600-cb203
	<b>PRODUCT</b>	<b>MATERIAL</b>			<b>COLOUR</b>	<b>CODE</b>
	MOUNTING CLIPS (2 Stk.)	STAINLESS STEEL			E	600-mc203

Surface mounted profile MINI 17 for flexible LED stripes up to width 12mm, INFO: for Led stripes up to max. 18 Watt

## RECESSED PROFILES FROM ALUMINIUM FOR LED STRIPES

### MINI 10 RECESSED

DETAIL	PRODUCT	L	W	H	COLOUR	CODE
	PROFILE	2000	18	13	W	600-1e201w
	PROFILE	2000	18	13	S	600-1e201b
	PROFILE	2000	18	13	AE	600-1e201s
	<b>PRODUCT</b>	<b>MATERIAL</b>			<b>COLOUR</b>	<b>CODE</b>
	END CAPS (Set 2 pcs.)	PLASTIC			W	600-1eek201w
	END CAPS (Set 2 pcs.)	PLASTIC			S	600-1eek201b
	END CAPS (Set 2 pcs.)	PLASTIC			S	600-1eek201s
	<b>PRODUCT</b>	<b>MATERIAL</b>			<b>COLOUR</b>	<b>CODE</b>
	COVER	PMMA WHITE SATINED			WO	600-0c201
	COVER	PMMA BLACK SATINED			SO	600-cb201
	<b>PRODUCT</b>	<b>MATERIAL</b>			<b>COLOUR</b>	<b>CODE</b>
	MOUNTING CLIPS (2 Stk.)	STAINLESS STEEL			E	600-mc201

Recessed profile MINI 10 for flexible LED stripes up to width 5mm, INFO: for Led stripes up to max. 5 Watt, mounting depth: 15mm, cutout: width 12mm, when using end caps: add +4mm to profile length

### MINI 14 RECESSED

DETAIL	PRODUCT	L	W	H	COLOUR	CODE
	PROFILE	2000	22	13	W	600-1e202w
	PROFILE	2000	22	13	S	600-1e202b
	PROFILE	2000	22	13	AE	600-1e202s
	<b>PRODUCT</b>	<b>MATERIAL</b>			<b>COLOUR</b>	<b>CODE</b>
	END CAPS (Set 2 pcs.)	PLASTIC			W	600-1eek202w
	END CAPS (Set 2 pcs.)	PLASTIC			S	600-1eek202b
	END CAPS (Set 2 pcs.)	PLASTIC			S	600-1eek202s
	<b>PRODUCT</b>	<b>MATERIAL</b>			<b>COLOUR</b>	<b>CODE</b>
	COVER	PMMA WHITE SATINED			WO	600-1c202
	COVER	PMMA BLACK SATINED			SO	600-cb202
	<b>PRODUCT</b>	<b>MATERIAL</b>			<b>COLOUR</b>	<b>CODE</b>
	MOUNTING CLIPS (2 Stk.)	STAINLESS STEEL			E	600-emc202

Recessed profile MINI 14 for flexible LED stripes up to width 8mm, INFO: for Led stripes up to max. 9 Watt, mounting depth: 15mm, cutout: width 16mm, when using end caps: add +4mm to profile length

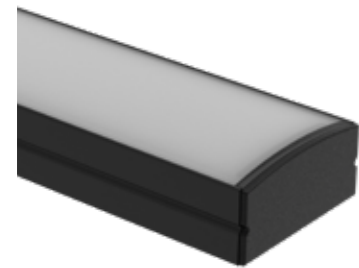
### MINI 17 RECESSED

DETAIL	PRODUCT	L	W	H	COLOUR	CODE
	PROFILE	2000	24	9	W	600-e203w
	PROFILE	2000	24	9	S	600-e203b
	PROFILE	2000	24	9	AE	600-e203s
	<b>PRODUCT</b>	<b>MATERIAL</b>			<b>COLOUR</b>	<b>CODE</b>
	END CAPS (Set 2 pcs.)	PLASTIC			W	600-eeek203w
	END CAPS (Set 2 pcs.)	PLASTIC			S	600-eeek203b
	END CAPS (Set 2 pcs.)	PLASTIC			S	600-eeek203s
	<b>PRODUCT</b>	<b>MATERIAL</b>			<b>COLOUR</b>	<b>CODE</b>
	COVER	PMMA WHITE SATINED			WO	600-c203
	COVER	PMMA BLACK SATINED			SO	600-cb203
	<b>PRODUCT</b>	<b>MATERIAL</b>			<b>COLOUR</b>	<b>CODE</b>
	MOUNTING CLIPS (2 Stk.)	STAINLESS STEEL			E	600-mc203

Recessed profile MINI 17 for flexible LED stripes up to width 12mm, INFO: for Led stripes up to max. 18 Watt, mounting depth: 11mm, cutout: width 19mm, when using end caps: add +4mm to profile length

## SURFACE PROFILES FROM ALUMINIUM FOR LED STRIPES

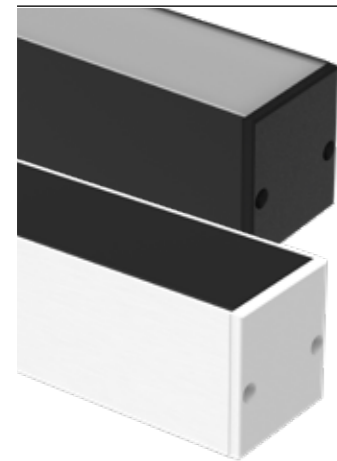
### MIDI SURFACE



DETAIL	PRODUCT	L	W	H	COLOUR	CODE
	PROFILE	2000	23	11,2		600-a204w
	PROFILE	2000	23	11,2		600-a204b
	PROFILE	2000	23	11,2		600-a204s
	<b>PRODUCT</b>		<b>MATERIAL</b>		<b>COLOUR</b>	<b>CODE</b>
	END CAPS (Set 2 pcs.)		PLASTIC			600-aek204w
	END CAPS (Set 2 pcs.)		PLASTIC			600-aek204b
	END CAPS (Set 2 pcs.)		PLASTIC			600-aek204s
	<b>PRODUCT</b>		<b>MATERIAL</b>		<b>COLOUR</b>	<b>CODE</b>
	COVER		PMMA WHITE SATINED			600-c204
	COVER		PMMA CLEAR			600-ck204
	<b>PRODUCT</b>		<b>MATERIAL</b>		<b>COLOUR</b>	<b>CODE</b>
	MOUNTING CLIPS (2 Stk.)		STAINLESS STEEL			600-mc204

Surface mounted profile MIDI for flexible LED stripes up to width 15mm, INFO: for Led stripes up to max. 28 Watt

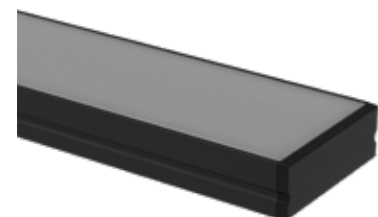
### MAXI SURFACE



DETAIL	PRODUCT	L	W	H	COLOUR	CODE
	PROFILE	2000	23	25		600-a205w
	PROFILE	2000	23	25		600-a205b
	PROFILE	2000	23	25		600-a205s
	<b>PRODUCT</b>		<b>MATERIAL</b>		<b>COLOUR</b>	<b>CODE</b>
	END CAPS (Set 2 pcs.)		PLASTIC			600-aek205w
	END CAPS (Set 2 pcs.)		PLASTIC			600-aek205b
	END CAPS (Set 2 pcs.)		PLASTIC			600-aek205s
	<b>PRODUCT</b>		<b>MATERIAL</b>		<b>COLOUR</b>	<b>CODE</b>
	END CAPS (Set 2 pcs.)		PLASTIC (H 25mm)			600-aekc205w
	END CAPS (Set 2 pcs.)		PLASTIC (H 25mm)			600-aekc205b
	END CAPS (Set 2 pcs.)		PLASTIC (H 25mm)			600-aekc205s
	<b>PRODUCT</b>		<b>MATERIAL</b>		<b>COLOUR</b>	<b>CODE</b>
	COVER FLAT		PMMA WHITE SATINED			600-c205
	COVER CUBIC		PMMA WHITE SATINED			600-cu205
	COVER FLAT		PMMA BLACK SATINED			600-cb205
	<b>PRODUCT</b>		<b>MATERIAL</b>		<b>COLOUR</b>	<b>CODE</b>
	MOUNTING CLIPS (2 Stk.)		STAINLESS STEEL			600-amc205

Surface mounted profile MAXI for flexible LED stripes up to width 15mm, INFO: for Led stripes up to max. 28 Watt

### MEGA SURFACE

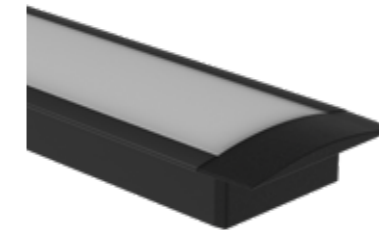


DETAIL	PRODUCT	L	W	H	COLOUR	CODE
	PROFILE	2000	30	10,1		600-a206w
	PROFILE	2000	30	10,1		600-a206b
	PROFILE	2000	30	10,1		600-a206s
	<b>PRODUCT</b>		<b>MATERIAL</b>		<b>COLOUR</b>	<b>CODE</b>
	END CAPS (Set 2 pcs.)		PLASTIC			600-aek206w
	END CAPS (Set 2 pcs.)		PLASTIC			600-aek206b
	END CAPS (Set 2 pcs.)		PLASTIC			600-aek206s
	<b>PRODUCT</b>		<b>MATERIAL</b>		<b>COLOUR</b>	<b>CODE</b>
	COVER		PMMA WHITE SATINED			600-c206
	<b>PRODUCT</b>		<b>MATERIAL</b>		<b>COLOUR</b>	<b>CODE</b>
	MOUNTING CLIPS (2 Stk.)		STAINLESS STEEL			600-amc206

Surface mounted profile MEGA for flexible LED stripes up to width 15mm, INFO: for Led stripes up to max. 28 Watt

## RECESSED PROFILES FROM ALUMINIUM FOR LED STRIPES

### MIDI RECESSED



DETAIL	PRODUCT	L	W	H	COLOUR	CODE
	PROFILE	2000	30	11,2		600-e204w
	PROFILE	2000	30	11,2		600-e204b
	PROFILE	2000	30	11,2		600-e204s
	<b>PRODUCT</b>		<b>MATERIAL</b>		<b>COLOUR</b>	<b>CODE</b>
	END CAPS (Set 2 pcs.)		PLASTIC			600-eek204w
	END CAPS (Set 2 pcs.)		PLASTIC			600-eek204b
	END CAPS (Set 2 pcs.)		PLASTIC			600-eek204s
	<b>PRODUCT</b>		<b>MATERIAL</b>		<b>COLOUR</b>	<b>CODE</b>
	COVER		PMMA WHITE SATINED			600-c204
	COVER		PMMA CLEAR			600-ck204
	<b>PRODUCT</b>		<b>MATERIAL</b>		<b>COLOUR</b>	<b>CODE</b>
	MOUNTING CLIPS (2 pcs.)		STAINLESS STEEL			600-mc204
	<b>PRODUCT</b>		<b>MATERIAL</b>		<b>COLOUR</b>	<b>CODE</b>
	MOUNTING CLIPS (2 pcs.)		STAINLESS STEEL			600-emc204

Recessed profile MIDI for flexible LED stripes up to width 15mm, INFO: for Led stripes up to max. 28 Watt, mounting depth: 15mm, cutout: width 24mm, when using end caps: add +4mm to profile length

### MAXI RECESSED

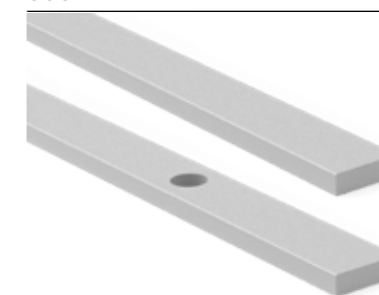


DETAIL	PRODUCT	L	W	H	COLOUR	CODE
	PROFILE	2000	37	25		600-e205w
	PROFILE	2000	37	25		600-e205b
	PROFILE	2000	37	25		600-e205s
	<b>PRODUCT</b>		<b>MATERIAL</b>		<b>COLOUR</b>	<b>CODE</b>
	END CAPS (Set 2 pcs.)		PLASTIC			600-eek205w
	END CAPS (Set 2 pcs.)		PLASTIC			600-eek205b
	END CAPS (Set 2 pcs.)		PLASTIC			600-eek205s
	<b>PRODUCT</b>		<b>MATERIAL</b>		<b>COLOUR</b>	<b>CODE</b>
	END CAPS (Set 2 pcs.)		PLASTIC (H 25mm)			600-eekc205w
	END CAPS (Set 2 pcs.)		PLASTIC (H 25mm)			600-eekc205b
	END CAPS (Set 2 pcs.)		PLASTIC (H 25mm)			600-eekc205s
	<b>PRODUCT</b>		<b>MATERIAL</b>		<b>COLOUR</b>	<b>CODE</b>
	COVER FLAT		PMMA WHITE SATINED			600-c205
	COVER CUBIC		PMMA WHITE SATINED			600-cu205
	COVER FLAT		PMMA BLACK SATINED			600-cb205
	<b>PRODUCT</b>		<b>MATERIAL</b>		<b>COLOUR</b>	<b>CODE</b>
	MOUNTING CLIPS (2 Stk.)		STAINLESS STEEL			600-emc205

Recessed profile MAXI for flexible LED stripes up to width 15mm, INFO: for Led stripes up to max. 28 Watt, mounting depth: 28mm, cutout: width 24mm, when using end caps: add +4mm to profile length

## ACCESSORIES

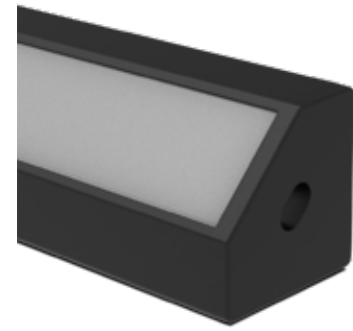
### COOL



PRODUCT	L	W	H	COLOUR	CODE
ALUMINIUM STRIPES	1000	10	3		600-1000
ALUMINIUM STRIPES WITH HOLES	1000	10	3		600-1000b
PRODUCT	L	W	H	COLOUR	CODE
ALUMINIUM STRIPES	3000	10	3		600-3000
ALUMINIUM STRIPES WITH HOLES	3000	10	3		600-3000b

**CORNER PROFILES FOR LED STRIPES FROM ALUMINIUM**

**MINI CORNER SURFACE**

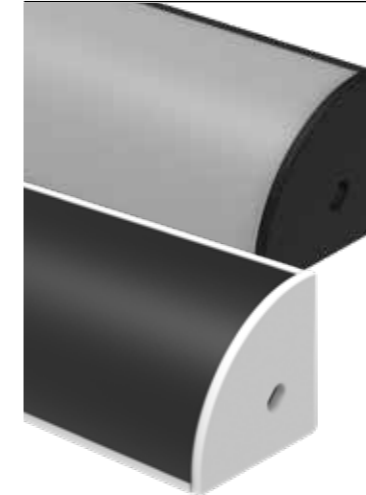


Surface mounted profile MINI CORNER for flexible LED stripes up to width 8mm, INFO: for Led stripes up to max. 12 Watt

DETAIL	PRODUCT	L	W	H	COLOUR	CODE
	PROFILE	2000	18,5	18,5	<b>W</b>	
	PROFILE	2000	18,5	18,5	<b>S</b>	600-a209b
	PROFILE	2000	18,5	18,5	<b>AE</b>	600-a209s
	<b>PRODUCT</b>	<b>MATERIAL</b>	<b>COLOUR</b>	<b>CODE</b>		
	END CAPS (Set 2 pcs.)	PLASTIC	<b>W</b>	600-aek209w		
	END CAPS (Set 2 pcs.)	PLASTIC	<b>S</b>	600-aek209b		
	END CAPS (Set 2 pcs.)	PLASTIC	<b>S</b>	600-aek209s		
	<b>PRODUCT</b>	<b>MATERIAL</b>	<b>COLOUR</b>	<b>CODE</b>		
	COVER	PMMA WHITE SATINED	<b>WO</b>	600-c209		
	COVER	PMMA BLACK SATINED	<b>SO</b>			
	<b>PRODUCT</b>	<b>MATERIAL</b>	<b>COLOUR</b>	<b>CODE</b>		
	MOUNTING CLIPS (2 Stk.)	STAINLESS STEEL	<b>E</b>	600-amc209		

**CORNER PROFILES FOR LED STRIPES FROM ALUMINIUM**

**MAXI CORNER SURFACE**



Surface mounted profile MAXI CORNER for flexible LED stripes up to width 15mm, INFO: for Led stripes up to max. 28 Watt

DETAIL	PRODUCT	L	W	H	COLOUR	CODE
	PROFILE	2000	30	30	<b>W</b>	600-a208w
	PROFILE	2000	30	30	<b>S</b>	600-a208b
	PROFILE	2000	30	30	<b>AE</b>	600-a208s
	<b>PRODUCT</b>	<b>MATERIAL</b>	<b>COLOUR</b>	<b>CODE</b>		
	END CAPS (Set 2 pcs.)	PLASTIC	<b>W</b>	600-aekr208w		
	END CAPS (Set 2 pcs.)	PLASTIC	<b>S</b>	600-aekr208b		
	END CAPS (Set 2 pcs.)	PLASTIC	<b>S</b>	600-aekr208s		
	<b>PRODUCT</b>	<b>MATERIAL</b>	<b>COLOUR</b>	<b>CODE</b>		
	COVER	PMMA WHITE SATINED	<b>WO</b>	600-cr208		
	COVER	PMMA BLACK SATINED	<b>SO</b>	600-crb208		
	<b>PRODUCT</b>	<b>MATERIAL</b>	<b>COLOUR</b>	<b>CODE</b>		
	MOUNTING CLIPS (2 Stk.)	STAINLESS STEEL	<b>E</b>	600-amc208		

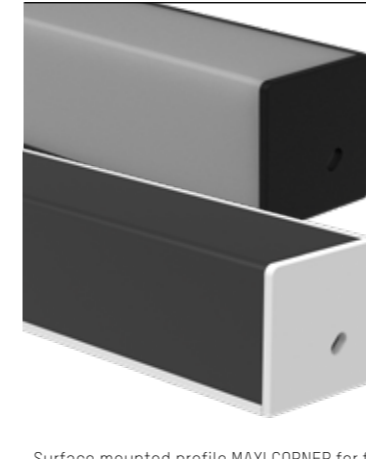
**MIDI CORNER SURFACE**



Surface mounted profile MIDI CORNER for flexible LED stripes up to width 8mm, INFO: for Led stripes up to max. 9 Watt

DETAIL	PRODUCT	L	W	H	COLOUR	CODE
	PROFILE	2000	16	16	<b>W</b>	600-a207w
	PROFILE	2000	16	16	<b>S</b>	600-a207b
	PROFILE	2000	16	16	<b>AE</b>	600-a207s
	<b>PRODUCT</b>	<b>MATERIAL</b>	<b>COLOUR</b>	<b>CODE</b>		
	END CAPS (Set 2 pcs.)	PLASTIC	<b>W</b>	600-aekr207w		
	END CAPS (Set 2 pcs.)	PLASTIC	<b>S</b>	600-aekr207b		
	END CAPS (Set 2 pcs.)	PLASTIC	<b>S</b>	600-aekr207s		
	<b>PRODUCT</b>	<b>MATERIAL</b>	<b>COLOUR</b>	<b>CODE</b>		
	COVER	PMMA WHITE SATINED	<b>WO</b>	600-cr207		
	COVER	PMMA BLACK SATINED	<b>SO</b>	600-crb207		
	<b>PRODUCT</b>	<b>MATERIAL</b>	<b>COLOUR</b>	<b>CODE</b>		
	MOUNTING CLIPS (2 Stk.)	STAINLESS STEEL	<b>E</b>	600-amc207		

**MAXI CORNER SURFACE**



Surface mounted profile MAXI CORNER for flexible LED stripes up to width 15mm, INFO: for Led stripes up to max. 28 Watt

DETAIL	PRODUCT	L	W	H	COLOUR	CODE
	PROFILE	2000	30	30	<b>W</b>	600-a208w
	PROFILE	2000	30	30	<b>S</b>	600-a208b
	PROFILE	2000	30	30	<b>AE</b>	600-a208s
	<b>PRODUCT</b>	<b>MATERIAL</b>	<b>COLOUR</b>	<b>CODE</b>		
	END CAPS (Set 2 pcs.)	PLASTIC	<b>W</b>	600-aek208w		
	END CAPS (Set 2 pcs.)	PLASTIC	<b>S</b>	600-aek208b		
	END CAPS (Set 2 pcs.)	PLASTIC	<b>S</b>	600-aek208s		
	<b>PRODUCT</b>	<b>MATERIAL</b>	<b>COLOUR</b>	<b>CODE</b>		
	COVER	PMMA WHITE SATINED	<b>WO</b>	600-c208		
	COVER	PMMA BLACK SATINED	<b>SO</b>	600-cb208		
	<b>PRODUCT</b>	<b>MATERIAL</b>	<b>COLOUR</b>	<b>CODE</b>		
	MOUNTING CLIPS (2 Stk.)	STAINLESS STEEL	<b>E</b>	600-amc208		

**MIDI CORNER SURFACE**



Surface mounted profile MIDI CORNER for flexible LED stripes up to width 8mm, INFO: for Led stripes up to max. 9 Watt

DETAIL	PRODUCT	L	W	H	COLOUR	CODE
	PROFILE	2000	16	16	<b>W</b>	600-a207w
	PROFILE	2000	16	16	<b>S</b>	600-a207b
	PROFILE	2000	16	16	<b>AE</b>	600-a207s
	<b>PRODUCT</b>	<b>MATERIAL</b>	<b>COLOUR</b>	<b>CODE</b>		
	END CAPS (Set 2 pcs.)	PLASTIC	<b>W</b>	600-aek207w		
	END CAPS (Set 2 pcs.)	PLASTIC	<b>S</b>	600-aek207b		
	END CAPS (Set 2 pcs.)	PLASTIC	<b>S</b>	600-aek207s		
	<b>PRODUCT</b>	<b>MATERIAL</b>	<b>COLOUR</b>	<b>CODE</b>		
	COVER	PMMA WHITE SATINED	<b>WO</b>	600-c207		
	COVER	PMMA BLACK SATINED	<b>SO</b>	600-cb207		
	<b>PRODUCT</b>	<b>MATERIAL</b>	<b>COLOUR</b>	<b>CODE</b>		
	MOUNTING CLIPS (2 Stk.)	STAINLESS STEEL	<b>E</b>	600-amc207		

## SURFACE PROFILES FOR LED STRIPES FROM ALUMINIUM

### FLEX SURFACE

DETAIL	PRODUCT	L	W	H	COLOUR	CODE
	PROFILE	2000	17,8	5,1	<b>AE</b>	600-a212s
	<b>maximum bending radius: 200mm</b>					
	PRODUCT	MATERIAL	COLOUR	CODE		
	END CAPS (Set 2 pcs.)	PLASTIC			<b>S</b>	600-aek212s
	COVER	PMMA WHITE SATINED			<b>WO</b>	600-c212
<b>maximum bending radius: 200mm</b>						
	MOUNTING CLIPS (2 Stk.)	STAINLESS STEEL			<b>E</b>	600-amc212

Surface mounted profile FLEX for flexible LED stripes up to width 12mm, INFO: for Led stripes up to max. 9 Watt

### MIDI CUBE SURFACE

DETAIL	PRODUCT	L	W	H	COLOUR	CODE
	PROFILE	2000	20	27	<b>W</b>	600-a211w
	PROFILE	2000	20	27	<b>S</b>	600-a211b
	PROFILE	2000	20	27	<b>AE</b>	600-a211s
<b>PRODUCT MATERIAL COLOUR CODE</b>						
	END CAPS (Set 2 pcs.)	PLASTIC			<b>W</b>	600-aek211w
	END CAPS (Set 2 pcs.)	PLASTIC			<b>S</b>	600-aek211b
	END CAPS (Set 2 pcs.)	PLASTIC			<b>S</b>	600-aek211s
	COVER	PMMA WHITE SATINED			<b>WO</b>	600-c211
<b>PRODUCT MATERIAL COLOUR CODE</b>						
	MOUNTING CLIPS (2 Stk.)	STAINLESS STEEL			<b>E</b>	600-amc211

Surface mounted profile MIDI CUBE for flexible LED stripes up to width 12mm, INFO: for Led stripes up to max. 15 Watt


### MAXI SOFT SURFACE

DETAIL	PRODUCT	L	W	H	COLOUR	CODE
	PROFILE	2000	26,7	24,4	<b>W</b>	600-a210w
	PROFILE	2000	26,7	24,4	<b>S</b>	600-a210b
	PROFILE	2000	26,7	24,4	<b>AE</b>	600-a210s
<b>PRODUCT MATERIAL COLOUR CODE</b>						
	END CAPS (Set 2 pcs.)	PLASTIC			<b>W</b>	600-aek210w
	END CAPS (Set 2 pcs.)	PLASTIC			<b>S</b>	600-aek210b
	END CAPS (Set 2 pcs.)	PLASTIC			<b>S</b>	600-aek210s
	COVER	PMMA WHITE SATINED			<b>WO</b>	600-c210
<b>PRODUCT MATERIAL COLOUR CODE</b>						
	MOUNTING CLIPS (2 Stk.)	STAINLESS STEEL			<b>E</b>	600-amc210

Surface mounted profile MAXI CUBE for flexible LED stripes up to width 18mm, INFO: for Led stripes up to max. 12 Watt


## RIDE PROFILES FOR LED STRIPES FROM ALUMINIUM

### RIDE SURFACE PROFILE

INFO	PRODUCT	L	W	H	COLOUR	CODE
	PROFILE	2000	35	35	<b>W</b>	577-125leer
	PROFILE	2000	35	35	<b>S</b>	577-126leer
	PROFILE	2000	35	35	<b>AE</b>	577-128leer
	PROFILE	4500	35	35	<b>W</b>	577-41005
	PROFILE	4500	35	35	<b>S</b>	577-41006
	PROFILE	4500	35	35	<b>AE</b>	577-41008
	<b>PRODUCT FOR COLOUR CODE</b>					
	END CAPS (Set 2 pcs.)	COVER FLAT			<b>W</b>	577-4605
	END CAPS (Set 2 pcs.)	COVER FLAT			<b>S</b>	577-4606
	END CAPS (Set 2 pcs.)	COVER FLAT			<b>S</b>	577-4604
<b>PRODUCT FOR COLOUR CODE</b>						
END CAPS (Set 2 pcs.)	COVER CUBIC			<b>W</b>	577-4625	
END CAPS (Set 2 pcs.)	COVER CUBIC			<b>S</b>	577-4626	
END CAPS (Set 2 pcs.)	COVER CUBIC			<b>S</b>	577-4624	


Surface mounted profile RIDE made of extruded aluminium, for flexible LED stripes, available colours: anodised aluminium, black or white powder-coated order end caps and covers separately

### RIDE RECESSED PROFILE

INFO	PRODUCT	L	W	H	MD	COLOUR	CODE
	PROFILE	2000	44	35	75	<b>W</b>	577-225leer
	PROFILE	2000	44	35	75	<b>S</b>	577-226leer
	PROFILE	2000	44	35	75	<b>AE</b>	577-228leer
	PROFILE	4500	44	35	75	<b>W</b>	577-41105
	PROFILE	4500	44	35	75	<b>S</b>	577-41106
	PROFILE	4500	44	35	75	<b>AE</b>	577-41108
	<b>PRODUCT FOR COLOUR CODE</b>						
	END CAPS (Set 2 pcs.)	COVER FLAT			<b>W</b>	577-4705	
	END CAPS (Set 2 pcs.)	COVER FLAT			<b>S</b>	577-4706	
	END CAPS (Set 2 pcs.)	COVER FLAT			<b>S</b>	577-4704	
<b>PRODUCT FOR COLOUR CODE</b>							
MOUNTING SET						577-5000	

Recessed profile RIDE made of extruded aluminium, for flexible LED stripes, available colours: anodised aluminium, black or white powder-coated order end caps and covers separately, mounting depth: 75mm, cutout: width 37mm, profile length less -3mm, **Only flat cover possible!**

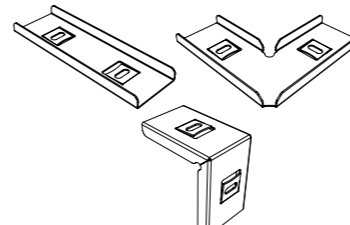
### COVERS FOR RIDE PROFILE

INFO	PRODUCT	L	W	H	COLOUR	CODE
	COVER FLAT	2000	35	2	<b>WO</b>	577-20pm
	COVER CUBIC	2000	35	35	<b>WO</b>	577-20pmk
	COVER FLAT	4500	35	2	<b>WO</b>	577-42100
	COVER CUBIC	4500	35	35	<b>WO</b>	577-42200


Opat cover in PMMA, for recessed profile RIDE, please order only flat cover

### CONNECTOR FOR RIDE PROFILE


PRODUCT	CODE
LINEAR CONNECTOR	577-4300
CORNER CONNECTOR FOR HORIZONTAL LIGHT SOLUTIONS	577-4400
CORNER CONNECTOR FOR VERTICAL LIGHT SOLUTIONS	577-4410




## CONVERTER SWITCHABLE

LED CONVERTER SLIM/U	INFO	W	V DC	L	W	H	COLOUR	CODE
	LED converter for LED stripes, not dimmable, 230V AC	13	24	158	22	19	W	24-122442




LED CONVERTER EFU	INFO	W	V DC	L	W	H	COLOUR	CODE
	LED converter for LED stripes, not dimmable, 230V AC	25	24	146	55	19	W	24-122322




LED CONVERTER LCV	INFO	W	V DC	L	W	H	COLOUR	CODE
	LED converter for LED stripes, not dimmable, 230V AC	60	24	180	52	30	W	24-127821
		120	24	300	40	30	W	24-127824




LED CONVERTER VPS LP	INFO	W	V DC	L	W	H	COLOUR	CODE
	LED converter for LED stripes, not dimmable, 230V AC	50	24	167	59	28,5	W	24-127903
		75	24	184	61	28,5	W	24-127905




LED CONVERTER VST	INFO	W	V DC	L	W	H	COLOUR	CODE
	LED converter for LED stripes, not dimmable, 230V AC	50	24	225	60	36	W	24-122752
		70	24	225	60	36	W	24-122750
		150	24	240	60	49	S	24-122754n




LED CONVERTER ST2 IP67	INFO	W	V DC	L	W	H	COLOUR	CODE
	LED converter for LED stripes, not dimmable, 230V AC	70	24	225	66	51	S	24-122479
		150	24	225	66	51	S	24-122511




LED CONVERTER HLG IP67	INFO	W	V DC	L	W	H	COLOUR	CODE
	Overload protection by current limitation protected against short circuit with automatic restart, overload, overvoltage built-in active PFC circuit, 240W, 24V	240	24	244	68	39	W	647-hlg24024




## CONVERTER DIMMABLE

LED CONVERTER VSTR 1-10V / PUSH / IR	INFO	W	V DC	L	W	H	COLOUR	CODE
	LED converter for LED stripes, dimmable 1-10V & Push Dimm., order IR-Accessories separately	3 x 40W RGB 1 x 100W Weiß	24	240	60	49	W	24-122730



DALI DT8 / PUSH LED CONVERTER	INFO	W	V DC	L	W	H	COLOUR	CODE
	LED converter for LED stripes, dimmable DALI DT8 Push Dimm. 2 CHANNEL	75	24	486	31	21	BR	711-24752dt8




DALI / PUSH LED CONVERTER	INFO	W	V DC	L	W	H	COLOUR	CODE
	LED converter for LED stripes, dimmable DALI Push Dimm. 2 CHANNEL	30	24	170	54	28	W	711-24302dt6




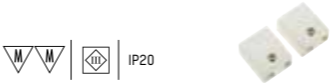
DALI / PUSH LED CONVERTER	INFO	W	V DC	L	W	H	COLOUR	CODE
	LED converter for LED stripes, dimmable DALI Push Dimm. 1 CHANNEL	150	24	365	43	30	W	711-241501dt6




LED CONVERTER QT DALI	INFO	W	V DC	L	W	H	COLOUR	CODE
	LED converter for LED stripes DALI dimmable, 230V AC	50	24	346	32	22	W	28-177900
		80	24	346	32	22	W	28-177924
		160	24	300	50	35	W	28-177948



## DIMMER



UNIVERSAL DIMMER	INFO	V DC	L	W	H	COLOUR	CODE
	Universal dimmer 1 channel, separate control input for DALI, 1-10V, Push. Sync connection for up to 9 slaves at 1-10V and Push control, max. connection: 5A, order strain relief separately.	12-50	153	30	21	W	322-ud3000
	STRAIN RELIEF for 1-channel universal dimmer, 2 pieces						322-ud7001






DALI DT8 / PUSH LED DIMMER - 4 CHANNEL	INFO	W	V DC	L	W	H	COLOUR	CODE
	Dimmer for LED stripes, DALI DT8 for RGB/W and tunable white, order converter separately	60-180	12-36	170	54	28	W	711-24180dt8



## LIGHT SCENE CONTROLLER

DALI DT8 RGBW - TOUCHPANEL	INFO	V	L	W	T	COLOUR	CODE
	Light scene controller DALI DT8 for RGB/W LED Stripes, 4 scenes configurable, for mounting in standard-recessed-housing Ø 68mm	230	86	86	41	W	711-01230d8rgbw
IP20							
DALI DT8 TUNABLE WHITE - TOUCHPANEL	INFO	V DC	L	W	T	COLOUR	CODE
	Light scene controller DALI DT8 for tunable white LED Stripes, 4 scenes configurable, for mounting in standard-recessedhousing Ø 68mm	230	86	86	41	W	711-01230d8tw
IP20							

## BLUETOOTH CONTROLLER

PUSH BUTTON INTERFACE	INFO	V	L	W	H	COLOUR	CODE	
	For the integration of standard buttons in the MOLTO LUCE Smart App BLUETOOTH dimm. 3 channel flush-mounted socket module	230	43	43	18	B	701-1005	
BLUETOOTH DIMMER-2 CHANNEL	INFO	W	V DC	L	W	H	COLOUR	CODE
	SED DCC 2CH BLL CONVERTER, PWM dimmable, wire cross-section up to 2.5mm, protection against overheating and short circuit, mains overvoltages, overload, ceiling insert cutout = 40mm, V out = 2 x 24V DC, 4.5A	2 x 50 1 x 100	24	115	34	19	B	701-1004
IP20								
INTERFACE SMART BLUETOOTH TO DALI	INFO	V	L	W	H	COLOUR	CODE	
	For the integration of a maximum of 40 DALI dimmable lights in the MOLTO LUCE Smart App BLUETOOTH dimm. Smart BLUETOOTH to DALI	230	85	30	22	B	701-1003	
IP20								

## MOLTO LUCE SMART APP



The Molto Luce Smart APP is your system for lighting control, regardless of whether it is individual groups, entire networks, scenes, time controls and complex solutions such as heat mapping. The Molto Luce Smart APP provides you with all options.

DOWNLOAD IN APP OR PLAY STORE





SMART APP INSTRUCTION MANUAL:



## WIRELESS CONTROLLER

LED LIGHT SCENES CONTROLLER	INFO	FOR	V DC	L	W	T	COLOUR	CODE
	RGBW radio controller for up to 4 zones, up to 4 scenes, speed and brightness can be adjusted, control can be mounted in standard recessed housing 68mm	WIFI / FUNK	12-24	86	86	10	S	711-000606
IP20								
REMOTE CONTROL	INFO	L	W	H	COLOUR	CODE		
	Radio remote control with color wheel for easy Tunable White control, 2 light colors can be saved, 2 scene selection, dimming levels can be called up in 25% steps	120	48	18	W	711-001106		
REMOTE CONTROL	INFO	L	W	H	COLOUR	CODE		
	Radio remote control for up to 4 zones, up to 4 scenes, speed and brightness can be adjusted, incl. wall fixation	140	48	16	S	711-000506		
REMOTE CONTROL	INFO	L	W	H	COLOUR	CODE		
	Wireless remote control for up to 5 zones for dimming the brightness, remote control can work with up to 8 different receivers	136	39	11	S	711-000906		
WLAN GATEWAY	INFO	V DC	L	W	H	COLOUR	CODE	
	WLAN gateway, for the control of 711-000305, corresponding App EASYColor Pro available free of charge in the Appstore or Playstore integration into in-house wlan possible.	12-24	110	85	24	S	711-000406	
IP20								
RGBW WIRELESS DIMMER	INFO	W	V DC	L	W	H	COLOUR	CODE
	4-channel RGBW radio dimmer for control of RGBW, RGB or white LED stripes, max. load 5A per channel, order power supply separately	240-720W	12-36	179	46	19	W	711-000305
IP20								
WIRELESS DIMMER TUNABLE WHITE	INFO	W	V DC	L	W	H	COLOUR	CODE
	2-channel radio dimmer for controlling Tunable White LED Stripes max.5A / channel, order power supply separately	110-240W	12-24	145	47	16	W	711-001005
IP20								

## DMX CONTROLLER

DMX RGBW LED DIMMER	INFO	V DC	L	W	H	COLOUR	CODE	
	RGBW LED dimmer DMX 12-36V, 12V - 36V DC, suitable to control RGBW LED stripes, max. load 5A per channel	12-36	178	46	18	W	711-000705	
IP20								
LED LIGHT SCENES CONTROLLER	INFO	FOR	V DC	L	W	T	COLOUR	CODE
	Light scene controller DMX for RGB/W Stripes, 4 scenes configurable, for mounting in standard-recessedhousing Ø 68mm	DMX II	12-24	86	86	10	S	711-000806
IP20								