

STRIPES 3

AUSTRIA | MOLTO LUCE GMBH

HEADQUARTERS WELS
Office & Showroom
Europastraße 45
4600 Wels
T: +43 7242 698-0
M: office@moltoluce.com



MOLTO LUCE®

MOLTO LUCE®

PREMIUM LED STRIPES



PREMIUM STRIPES
06-07

BASIC LED STRIPES INDOOR



BASIC WHITE STRIPES
10-13



BASIC RGB STRIPES
16-17



BASIC RGB/W STRIPES
16-17

BASIC LED STRIPES OUTDOOR



BASIC WHITE STRIPES IP67
20-21



BASIC RGB STRIPES IP67
22-23



BASIC RGB/W STRIPES IP67
22-23

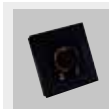
PROFILES AND ACCESSOIRES



PROFILES
24-29



CONVERTER
30-31



CONTROLLER
31-31

PRICE INFORMATION

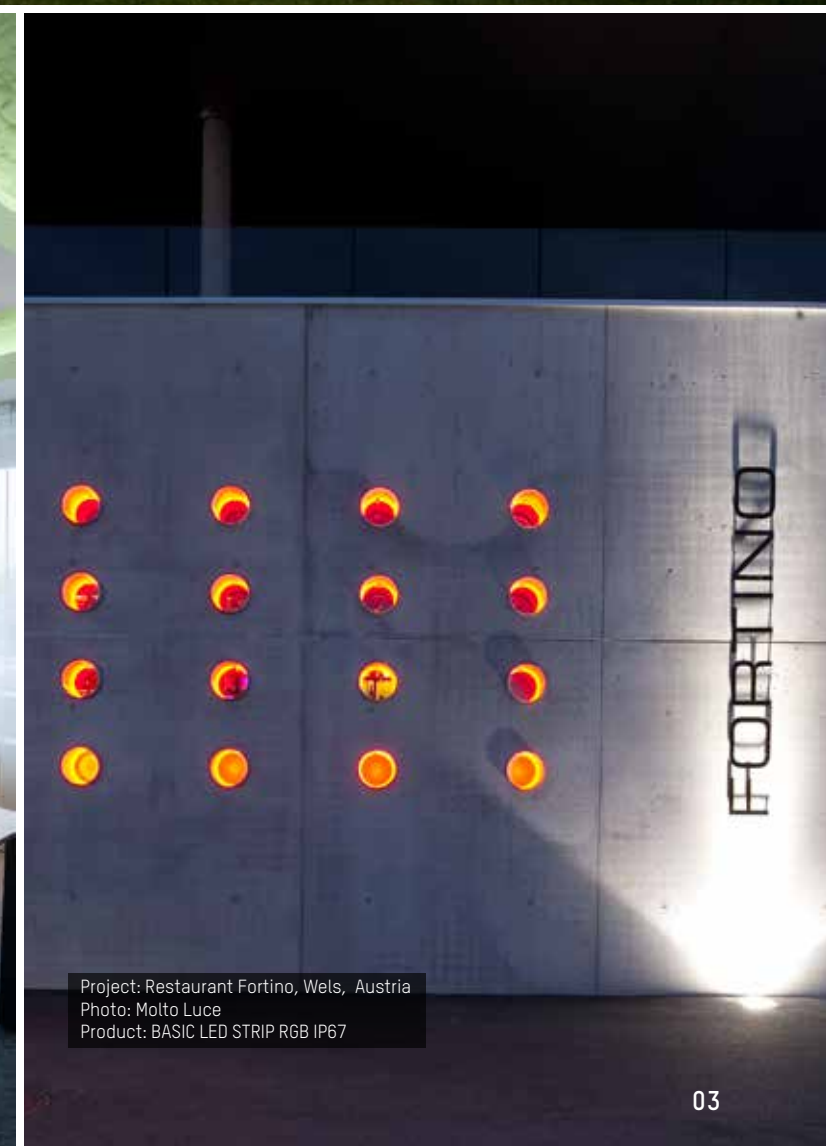
All prices in catalogue are excl. VAT. This pricelist replaces all previous lists. Goods will remain our property until full pending payment. Prices are subject to change without prior notice, errors excepted. All deliveries under our known terms and sales conditions. Info under www.moltoluce.com



Project: Private residence, Austria
Photo: Molto Luce
Product: PREMIUM LED STRIP



Project: Karriere.at, Linz, Austria
Photo: Molto Luce
Product: BASIC LED STRIP RGB



Project: Restaurant Fortino, Wels, Austria
Photo: Molto Luce
Product: BASIC LED STRIP RGB IP67



Project: Pfeffermühle, Austria
Photo: Tischlerei Kotrasch
Product: PREMIUM LED STRIP

PREMIUM LED STRIPES IP65



LED 24V IP65 | EEL: A+++ - A

PREMIUM LED STRIPE 5W/M SOLD BY METER

INFO	POWER	V DC	LUMEN / M	CRI	LED	L	W	H	CODE	EURO PER M	STOCK		
flexible PREMIUM LED stripe, IP65, by plasma coating, sold by meter, 120 LEDs/m, 5W per meter, separable each 5 cm, fixing with double-sided adhesive tape 3M, without converter. In order to guarantee a long service life and perfect functioning of the LED stripes, they must be mounted on heat conducting material! Price quotation without cut to size! Per Roll = max. 10m	LED 5W	24	440	>90	2500K	lt. order	5	1,4	283-240565uuwwkonf	26,00			
	LED 5W	24	470	>90	2700K	lt. order	5	1,4	283-240565uwkknf	26,00			
	LED 5W	24	520	>90	3000K	lt. order	5	1,4	283-240565swkknf	26,00			
	LED 5W	24	580	>90	4000K	lt. order	5	1,4	283-240565nwkknf	26,00			
PACKAGING													
Please calculate per cut 1x 283-konf additionally. Attention: Maximum length per feed point 6m										INFO	CODE	EURO	STOCK
	LED Stripe IP65 per cut contains: cut to size, 50cm soldered connection cable, cut seal, system test, ESD packing									283-konf	19,50		

PREMIUM LED STRIPE 9W/M SOLD BY METER

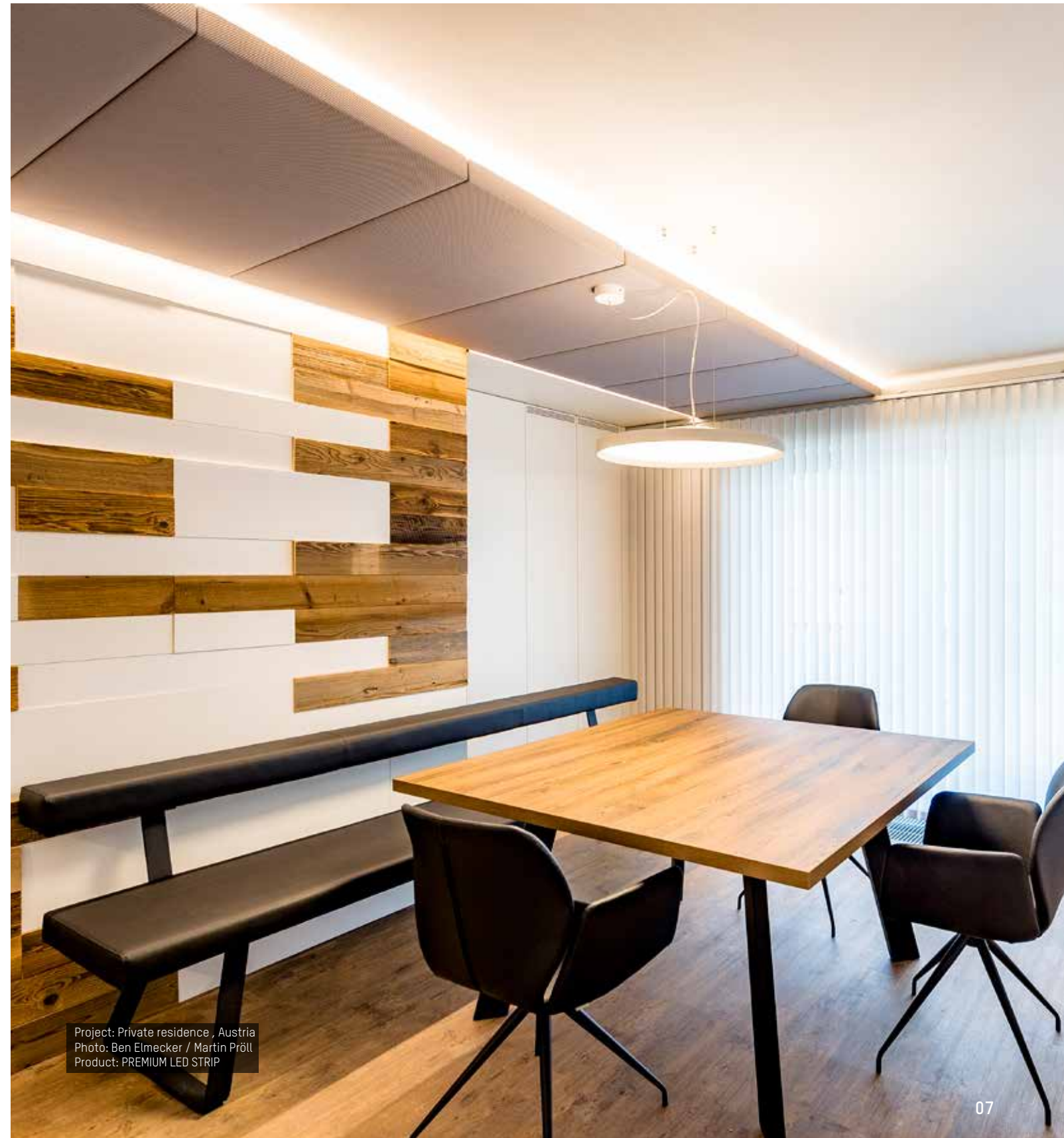
INFO	POWER	V DC	LUMEN / M	CRI	LED	L	W	H	CODE	EURO PER M	STOCK		
flexible PREMIUM LED stripe, IP65, by plasma coating, sold by meter, 120 LEDs/m, 9W / meter, separable each 5 cm, fixing with double-sided adhesive tape 3M, without converter. In order to guarantee a long service life and perfect functioning of the LED stripes, they must be mounted on heat conducting material! Price quotation without cut to size! Per Roll = max. 30m	LED 9W	24	950	>90	2500K	lt. order	8	1,4	283-240965uuwwkonf	43,00			
	LED 9W	24	1054	>90	2700K	lt. order	8	1,4	283-240965uwkknf	43,00			
	LED 9W	24	1058	>90	3000K	lt. order	8	1,4	283-240965swkknf	43,00			
	LED 9W	24	1134	>90	4000K	lt. order	8	1,4	283-240965nwkknf	43,00			
PACKAGING													
Please calculate per cut 1x 283-konf additionally. Attention: Maximum length per feed point 10m										INFO	CODE	EURO	STOCK
	LED Stripe IP65 per cut contains: cut to size, 50cm soldered connection cable, cut seal, system test, ESD packing									283-konf	19,50		

PREMIUM LED STRIPE 18W/M SOLD BY METER

INFO	POWER	V DC	LUMEN / M	CRI	LED	L	W	H	CODE	EURO PER M	STOCK		
flexible PREMIUM LED stripe, IP65, by plasma coating, sold by meter, 120 LEDs/m, 18W / meter, separable each 5 cm, fixing with double-sided adhesive tape 3M, without converter. In order to guarantee a long service life and perfect functioning of the LED stripes, they must be mounted on heat conducting material! Price quotation without cut to size! Per Roll = max. 30m	LED 18W	24	1755	>90	2500K	lt. order	8	1,4	283-241865uuwwkonf	45,00			
	LED 18W	24	1934	>90	2700K	lt. order	8	1,4	283-241865uwkknf	45,00			
	LED 18W	24	1980	>90	3000K	lt. order	8	1,4	283-241865swkknf	45,00			
	LED 18W	24	2148	>90	4000K	lt. order	8	1,4	283-241865nwkknf	45,00			
PACKAGING													
Please calculate per cut 1x 283-konf additionally. Attention: Maximum length per feed point 6m										INFO	CODE	EURO	STOCK
	LED Stripe IP65 per cut contains: cut to size, 50cm soldered connection cable, cut seal, system test, ESD packing									283-konf	19,50		

PREMIUM LED STRIPE 28W/M SOLD BY METER

INFO	POWER	V DC	LUMEN / M	CRI	LED	L	W	H	CODE	EURO PER LFM	STOCK		
flexible PREMIUM LED stripe, IP65, by plasma coating, sold by meter, 120 LEDs/m, 28W / meter, separable each 5 cm, fixing with double-sided adhesive tape 3M, without converter. In order to guarantee a long service life and perfect functioning of the LED stripes, they must be mounted on heat conducting material! Price quotation without cut to size! Per Roll = max. 30m	LED 28W	24	2500	>90	2500K	lt. order	8	1,4	283-242865uuwwkonf	49,00			
	LED 28W	24	2890	>90	2700K	lt. order	8	1,4	283-242865uwkknf	49,00			
	LED 28W	24	2922	>90	3000K	lt. order	8	1,4	283-242865swkknf	49,00			
	LED 28W	24	3191	>90	4000K	lt. order	8	1,4	283-242865nwkknf	49,00			
PACKAGING													
Please calculate per cut 1x 283-konf additionally. Attention: Maximum length per feed point 4m										INFO	CODE	EURO	STOCK
	LED Stripe IP65 per cut contains: cut to size, 50cm soldered connection cable, cut seal, system test, ESD packing									283-konf	19,50		



Project: Private residence, Austria
Photo: Ben Elmacker / Martin Pröll
Product: PREMIUM LED STRIP



BASIC LED STRIPES IP20



BASIC LED STRIPE 4,8W/M ROLL 5M OR PER METER

INFO	POWER	V DC	LUMEN	CRI	LED	L	W	H	CODE	EURO	STOCK
flexible BASIC LED stripe, roll 5000mm, 300 SMD3528 LEDs, 60 LEDs / meter, 4,8W / meter, separable each 6 LEDs (ca. 10cm), fixing with double-sided adhesive tape 3M, without converter,	LED 24W	24	2595	>80	2600-2800K	5000	8	3	746-242420ww	per Roll 5m 34,50	👍
	LED 24W	24	2705	>80	3800-4200K	5000	8	3	746-242420nw	per Roll 5m 34,50	👍
	LED 4,8W	24	520 / m	>80	2600-2800K	lt. order	8	3	* 746-242420wwkonf	per Meter 6,90	👍
	LED 4,8W	24	540 / m	>80	3800-4200K	lt. order	8	3	* 746-242420nwkonf	per Meter 6,90	👍

Attention: No resistance to chemical substances or vapours (e.g. chlorine and similar). In order to guarantee a long service life and perfect functioning of the LED stripes, they must be mounted on heat conducting material!

Attention: Maximum length per feed point 10m

* Per Roll = max. 30m

ACCESSORIES



INFO	CODE	EURO	STOCK
FAST POWER FEED incl. 200mm cable	746-fc1220w	2,50	👍
FAST CONNECTOR	746-lc1220w	1,20	👍
LINEAR CONNECTOR FLEX. incl. 100mm cable	746-lcf1220w	2,40	👍

PACKING BY THE METRE



INFO	CODE	EURO	STOCK
LED strip IP20 per cutting includes: Cutting, 50cm connecting cable soldered, system test, packaging	746-konfip20	19,50	👍

BASIC LED STRIPE 9,6W/M ROLL 5M OR PER METER

INFO	POWER	V DC	LUMEN	CRI	LED	L	W	H	CODE	EURO	STOCK
flexible BASIC LED stripe, roll 5000mm, 300 SMD3528 LEDs, 60 LEDs / meter, 9,6W / meter, separable each 6 LEDs (ca. 10cm), fixing with double-sided adhesive tape 3M, without converter,	LED 48W	24	4610	>80	2600-2800K	5000	8	3	746-244820ww	per Roll 5m 39,50	👍
	LED 48W	24	5455	>80	3800-4200K	5000	8	3	746-244820nw	per Roll 5m 39,50	👍
	LED 9,6W	24	920 / m	>80	2600-2800K	lt. order	8	3	* 746-244820wwkonf	per Meter 7,90	👍
	LED 9,6W	24	1090 / m	>80	3800-4200K	lt. order	8	3	* 746-244820nwkonf	per Meter 7,90	👍

Attention: No resistance to chemical substances or vapours (e.g. chlorine and similar). In order to guarantee a long service life and perfect functioning of the LED stripes, they must be mounted on heat conducting material!

Attention: Maximum length per feed point 8m

* Per Roll = max. 30m

ACCESSORIES



INFO	CODE	EURO	STOCK
FAST POWER FEED incl. 200mm cable	746-fc1220w	2,50	👍
FAST CONNECTOR	746-lc1220w	1,20	👍
LINEAR CONNECTOR FLEX. incl. 100mm cable	746-lcf1220w	2,40	👍

PACKING BY THE METRE



INFO	CODE	EURO	STOCK
LED strip IP20 per cutting includes: Cutting, 50cm connecting cable soldered, system test, packaging	746-konfip20	19,50	👍



Project: Private residence, Austria
Photo: RP Architektur & Design GmbH
Product: BASIC LED STRIP



Project: Private residence, Austria
Photo: Malto Luce
Product: BASIC LED STRIP



Project: Pfeffermühle, Austria
Photo: Tischlerei Kotrasch
Product: BASIC LED STRIP

BASIC LED STRIPES IP20



BASIC LED STRIPE 14,4W/M ROLL 5M OR PER METER

INFO	POWER	V DC	LUMEN	CRI	LED	L	W	H	CODE	EURO	STOCK
flexible BASIC LED stripe, roll 5000mm, 300 SMD5060 LEDs, 60 LEDs / meter, 14,4W / meter, separable each 6 LEDs (ca. 10cm), fixing with double-sided adhesive tape 3M, without converter,	LED 72W	24	6530	>80	2600-2800K	5000	12	4	746-247220ww	per Roll 5m 65,00	👍
	LED 72W	24	7275	>80	3800-4200K	5000	12	4	746-247220nwnl	per Roll 5m 65,00	👍
	LED 14,4W	24	1305 / m	>80	2600-2800K	tt. order	12	4	* 746-247220wwkonf	per Meter 13,00	👍
	LED 14,4W	24	1455 / m	>80	3800-4200K	tt. order	12	4	* 746-247220nwnkonf	per Meter 13,00	👍

Attention: No resistance to chemical substances or vapours (e.g. chlorine and similar). In order to guarantee a long service life and perfect functioning of the LED stripes, they must be mounted on heat conducting material!

Attention: Maximum length per feed point 6m

* Per Roll = max. 30m

ACCESSORIES		INFO	CODE	EURO	STOCK
		FAST POWER FEED incl. 200mm cable	746-fc2420w	2,50	👍
		FAST CONNECTOR	746-lc2420w	1,20	👍
		LINEAR CONNECTOR FLEX. incl. 100mm cable	746-lcf2420w	2,60	👍
PACKING BY THE METRE		INFO	CODE	EURO	STOCK
		LED strip IP20 per cutting includes: Cutting, 50cm connecting cable soldered, system test, packaging	746-konfip20	19,50	👍

BASIC LED STRIPE 28,8W/M ROLL 2,5M DOUBLE ROW LEDS

INFO	POWER	V DC	LUMEN	CRI	LED	L	W	H	CODE	EURO	STOCK
flexible BASIC LED stripe, roll 2500mm, 300 SMD5060 LEDs, double-row equipped (120 LEDs / meter), 28,8W / meter, separable each 12 LEDs (ca. 10cm), fixing with double-sided adhesive tape 3M, without converter,	LED 72W	24	5665	>80	2600-2800K	2500	15	3	746-247420ww	per Roll 2,5m 65,00	👍
	LED 72W	24	6020	>80	3800-4200K	2500	15	3	746-247420nw	per Roll 2,5m 65,00	👍

Attention: No resistance to chemical substances or vapours (e.g. chlorine and similar).

Attention: Maximum length per feed point 2,5m



Project: Dentists Spiritus & Sanger, Erkelenz, Germany
Product: BASIC LED STRIP



Project: Restaurant OX, Plus City Pasching, Austria
Photo: LSD
Product: LED STRIP RGB



Project: Private residence, Austria
Photo: Molto Luce
Product: LED STRIP RGB



Project: Private residence, Austria
Photo: Tischlerei Kotrasch
Product: LED STRIP RGB/W

BASIC LED STRIPES IP20



BASIC LED STRIPE **RGB** 14,4W/M ROLL 5M

INFO	POWER	V DC	LUMEN	CRI	LED	L	W	H	CODE	EURO	STOCK	
flexible BASIC LED stripe RGB, roll 5000mm, 300 SMD5060 LEDs, 60 LEDs / meter, 14,4W / meter, separable each 6 LEDs (ca. 10cm), fixing with double-sided adhesive tape 3M, without converter,	LED 72W	24	1200	----	RGB	5000	10	4	746-247220rgb	per Roll 5m 85,00	👍	
ACCESSORIES												
<p>Attention: No resistance to chemical substances or vapours (e.g. chlorine and similar). In order to guarantee a long service life and perfect functioning of the LED stripes, they must be mounted on heat conducting material!</p> <p>Attention: Maximum length per feed point 6m</p>												
INFO												
FAST POWER FEED incl. 200mm cable										746-fc1220rgb	2,50	👍
FAST CONNECTOR										746-lc1220rgb	1,20	👍
LINEAR CONNECTOR FLEX. incl. 100mm cable										746-lcf1220rgb	2,70	👍

BASIC LED STRIPE **RGB W** 18,1W/M ROLLE 5M

INFO	POWER	V DC	LUMEN	CRI	LED	L	W	H	CODE	EURO	STOCK
Fflexible BASIC LED stripe RGB-W, roll 5000mm, 480 SMD LEDs, 48 SMD RGB 5050 LEDs/meter, 48 SMD2835 LEDs / meter, 18,1W / meter, separable each 12 LEDs (ca. 13cm), fixing with double-sided adhesive tape 3M, without converter,	LED 91W	24	1100 RGB 850 WHITE	----	RGB 2600-2800	5000	15	2,5	746-249120rgbw	per Roll 5m 96,00	👍
INFO											
<p>Attention: No resistance to chemical substances or vapours (e.g. chlorine and similar). In order to guarantee a long service life and perfect functioning of the LED stripes, they must be mounted on heat conducting material!</p> <p>Attention: Maximum length per feed point 5m</p>											



Project: Kreisel Electric, Austria
Photo: Martin Pröll
Product: LED STRIP RGB



Project: Andels Hotel, Lodz, Poland
Planing: OP Arcitects
Product: LED STRIP RGB



Project: Dorfbahn, Gerlos, Austria
Photo: Dorfbahn Gerlos
Product: LED STRIP RGBW



Project: ISO CELL, Neumarkt, Austria
Photo: Molto Luce
Product: LED STRIP RGB IP67

BASIC LED STRIPES IP67



LED 24W IP67 | EEL: A+++ - A

BASIC LED STRIPE 24W (4,8W/M) ROLL 5M

INFO	POWER	V DC	LUMEN	CRI	LED	L	W	H	CODE	EURO 5M	STOCK
flexible BASIC LED stripe, roll 5000mm, 300 SMD5060 LEDs, 60 LEDs / meter, 4,8W / meter, separable each 6 LEDs (ca. 10cm). Stripe must be sealed after separation! fixing with double-sided adhesive tape 3M, with DC plug and 2 sockets, without converter	LED 24W	24	1795	>80	2600-2800K	5000	10	4	746-242467ww	55,00	
	LED 24W	24	2025	>80	3800-4200K	5000	10	4	746-242467nw	55,00	

Attention: No resistance to chemical substances or vapours (e.g. chlorine and similar). In order to guarantee a long service life and perfect functioning of the LED stripes, they must be mounted on heat conducting material!

Attention: Maximum length per feed point 5m

ACCESSORIES



order separately

INFO	CODE	EURO	STOCK
SILICON END CAP	746-1003	0,50	
SHRINK TUBE	746-1004	0,40	
FEED IN COVER	746-1101	1,50	
DC PLUG incl. 130mm cable	746-1100	2,10	
DC SOCKET incl. 130mm cable	746-1200	2,10	

BASIC LED STRIPE 72W (14,4W/M) ROLL 5M

INFO	POWER	V DC	LUMEN	CRI	LED	L	W	H	CODE	EURO 5M	STOCK
flexible BASIC LED stripe, roll 5000mm, 300 SMD5060 LEDs, 60 LEDs / meter, 14,4W / meter, separable each 6 LEDs (ca. 10cm). Stripe must be sealed after separation! Infixing with double-sided adhesive tape 3M, with DC plug and 2 sockets, without converter,	LED 72W	24	4660	>80	2600-2800K	5000	14,2	4	746-247267wwng1	95,00	
	LED 72W	24	4885	>80	3800-4200K	5000	14,2	4	746-247267nw	95,00	

Attention: No resistance to chemical substances or vapours (e.g. chlorine and similar). In order to guarantee a long service life and perfect functioning of the LED stripes, they must be mounted on heat conducting material!

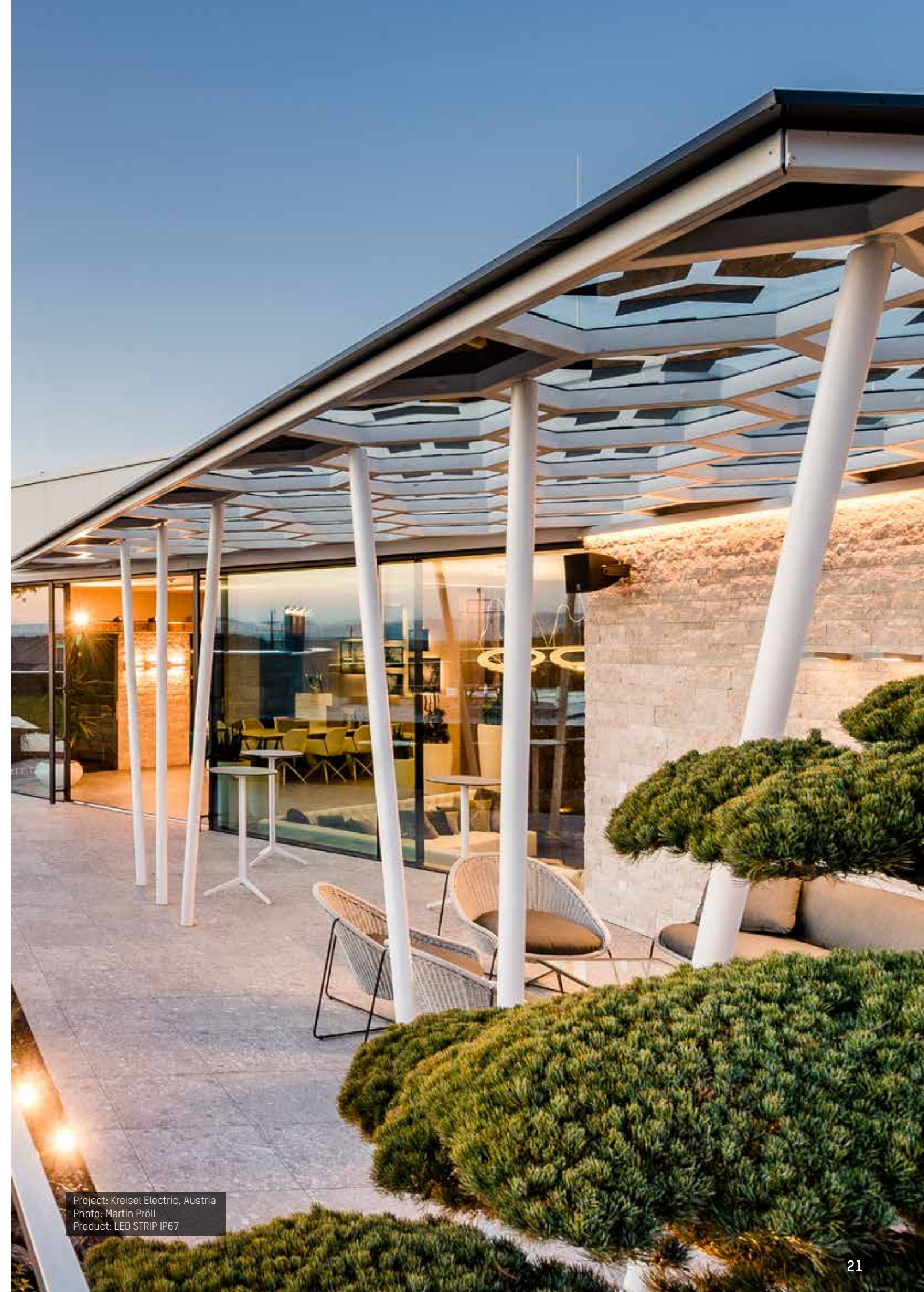
Attention: Maximum length per feed point 5m

ACCESSORIES



order separately

ARTIKEL	CODE	EURO	STOCK
SILICON END CAP	746-1001	0,50	
SHRINK TUBE	746-1004	0,40	
FEED IN COVER	746-1101	1,50	
DC PLUG incl. 130mm cable	746-1100	2,10	
DC SOCKET incl. 130mm cable	746-1200	2,10	



Project: Kreisel Electric, Austria
Photo: Martin Pröll
Product: LED STRIP IP67

BASIC LED STRIPES IP67



LED 24V | excl. | incl. | IP67 | EEL: A++ - A

BASIC LED STRIPE **RGB** 72W (14,4W/M) ROLL 5M

INFO	POWER	V DC	LUMEN	CRI	LED	L	W	H	CODE	EURO 5M	STOCK
flexible BASIC LED stripe, roll 5000mm, 300 SMD5060 LEDs, 60 LEDs / meter, 14,4W / meter, separable each 6 LEDs (approx. 10cm), Stripe must be sealed after separation! fixing with double-sided adhesive tape 3M, with DC plug and 2 sockets, without converter,	LED 72W	24	1080	---	RGB	5000	12,2	4	746-247267rgb	110,00	👍

Attention: No resistance to chemical substances or vapours (e.g. chlorine and similar). In order to guarantee a long service life and perfect functioning of the LED stripes, they must be mounted on heat conducting material!

Attention: Maximum length per feed point 5m

ACCESSORIES



order separately

INFO	CODE	EURO	STOCK
SILICON END CAP for 72W RGB LED Strip	746-1002	0,50	👍

BASIC LED STRIPE **RGB W** 18,1W/M ROLL 5 M

INFO	POWER	V DC	LUMEN	CRI	LED	L	W	H	CODE	EURO 5M	STOCK
flexible BASIC LED stripe RGB-W, roll 5000mm, 480 SMD LEDs, 48 SMD RGB 5050 LEDs/meter, 48 SMD2835 LEDs / meter, 18,1W / meter, separable each 12 LEDs (approx. 13cm), Stripe must be sealed after separation! Fixing with double-sided adhesive tape 3M, with DC plug and 2 sockets, without converter,	LED 91W	24	1100 RGB 850 WHITE	---- >80	RGB 2600-2800	5000	15	5,5	746-249167rgbw	per Roll 125,00	👍

Attention: No resistance to chemical substances or vapours (e.g. chlorine and similar). In order to guarantee a long service life and perfect functioning of the LED stripes, they must be mounted on heat conducting material!

Attention: Maximum length per feed point 5m



Project: Dorfbahn, Gerlos, Austria
Photo: Dorfbahn Gerlos
Product: LED STRIP RGB/W IP67



Projekt: Cafe Central, Linz, Österreich
Foto: LSD
Produkt: LED STRIP RGB IP67

SURFACE PROFILES FOR LED STRIPES FROM ALUMINIUM

MINI 10 SURFACE

DETAIL	PRODUCT	L	W	H	COLOUR	CODE	EURO	STOCK
	PROFILE	2000	10	10	W	600-a201w	9,00	👍
	PROFILE	2000	10	10	S	600-a201b	9,00	👍
	PROFILE	2000	10	10	AE	600-a201s	8,50	👍
	PRODUCT	MATERIAL	COLOUR	CODE	EURO	STOCK		
	END CAPS (Set 2 pce.)	PLASTIC	W	600-aek201w	1,00	👍		
	END CAPS (Set 2 pce.)	PLASTIC	S	600-aek201b	1,00	👍		
	END CAPS (Set 2 pce.)	PLASTIC	S	600-aek201s	1,00	👍		
	PRODUCT	MATERIAL	COLOUR	CODE	EURO	STOCK		
	COVER	PMMA SATINED	WO	600-c201	4,70	👍		
	PRODUCT	MATERIAL	COLOUR	CODE	EURO	STOCK		
	MOUNTING CLIPS (2 pce.)	STAINLESS STEEL	E	600-mc201	0,80	👍		
	PRODUCT	MATERIAL	COLOUR	CODE	EURO	STOCK		

Surface mounted profile MINI 10 for flexible LED stripes up to width 5mm, INFO: for Led stripes up to max. 5 Watt

MINI 14 SURFACE

DETAIL	PRODUCT	L	W	H	COLOUR	CODE	EURO	STOCK
	PROFILE	2000	14	8	W	600-a202w	9,00	👍
	PROFILE	2000	14	8	S	600-a202b	9,00	👍
	PROFILE	2000	14	8	AE	600-a202s	8,50	👍
	PRODUCT	MATERIAL	COLOUR	CODE	EURO	STOCK		
	END CAPS (Set 2 pce.)	PLASTIC	W	600-aek202w	1,10	👍		
	END CAPS (Set 2 pce.)	PLASTIC	S	600-aek202b	1,10	👍		
	END CAPS (Set 2 pce.)	PLASTIC	S	600-aek202s	1,10	👍		
	PRODUCT	MATERIAL	COLOUR	CODE	EURO	STOCK		
	COVER	PMMA SATINED	WO	600-c202	5,20	👍		
	PRODUCT	MATERIAL	COLOUR	CODE	EURO	STOCK		
	MOUNTING CLIPS (2 pce.)	STAINLESS STEEL	E	600-amc202	1,00	👍		
	PRODUCT	MATERIAL	COLOUR	CODE	EURO	STOCK		

Surface mounted profile MINI 14 for flexible LED stripes up to width 8mm, INFO: for Led stripes up to max. 9 Watt

MINI 17 SURFACE

DETAIL	PRODUCT	L	W	H	COLOUR	CODE	EURO	STOCK
	PROFILE	2000	17	8,8	W	600-a203w	10,50	👍
	PROFILE	2000	17	8,8	S	600-a203b	10,50	👍
	PROFILE	2000	17	8,8	AE	600-a203s	10,00	👍
	PRODUCT	MATERIAL	COLOUR	CODE	EURO	STOCK		
	END CAPS (Set 2 pce.)	PLASTIC	W	600-aek203w	1,20	👍		
	END CAPS (Set 2 pce.)	PLASTIC	S	600-aek203b	1,20	👍		
	END CAPS (Set 2 pce.)	PLASTIC	S	600-aek203s	1,20	👍		
	PRODUCT	MATERIAL	COLOUR	CODE	EURO	STOCK		
	COVER	PMMA SATINED	WO	600-c203	5,80	👍		
	PRODUCT	MATERIAL	COLOUR	CODE	EURO	STOCK		
	MOUNTING CLIPS (2 pce.)	STAINLESS STEEL	E	600-mc203	1,30	👍		
	PRODUCT	MATERIAL	COLOUR	CODE	EURO	STOCK		

Surface mounted profile MINI 17 for flexible LED stripes up to width 12mm, INFO: for Led stripes up to max. 18 Watt

RECESSED PROFILES FOR LED STRIPES FROM ALUMINIUM

MINI 10 RECESSED

DETAIL	PRODUCT	L	W	H	COLOUR	CODE	EURO	STOCK
	PROFILE	2000	18	13	W	600-e201w	15,00	👍
	PROFILE	2000	18	13	S	600-e201b	15,00	👍
	PROFILE	2000	18	13	AE	600-e201s	14,50	👍
	PRODUCT	MATERIAL	COLOUR	CODE	EURO	STOCK		
	END CAPS (Set 2 pce.)	PLASTIC	W	600-eek201w	1,10	👍		
	END CAPS (Set 2 pce.)	PLASTIC	S	600-eek201b	1,10	👍		
	END CAPS (Set 2 pce.)	PLASTIC	S	600-eek201s	1,10	👍		
	PRODUCT	MATERIAL	COLOUR	CODE	EURO	STOCK		
	COVER	PMMA SATINED	WO	600-c201	4,70	👍		
	PRODUCT	MATERIAL	COLOUR	CODE	EURO	STOCK		
	MOUNTING CLIPS (2 pce.)	STAINLESS STEEL	E	600-mc201	0,80	👍		
	PRODUCT	MATERIAL	COLOUR	CODE	EURO	STOCK		

Recessed profile MINI 10 for flexible LED stripes up to width 5mm, INFO: for Led stripes up to max. 5 Watt, mounting depth: 15mm, cutout: width 12mm, when using end caps: add +4mm to profile length

MINI 14 RECESSED

DETAIL	PRODUCT	L	W	H	COLOUR	CODE	EURO	STOCK
	PROFILE	2000	22	13	W	600-e202w	15,50	👍
	PROFILE	2000	22	13	S	600-e202b	15,50	👍
	PROFILE	2000	22	13	AE	600-e202s	15,00	👍
	PRODUCT	MATERIAL	COLOUR	CODE	EURO	STOCK		
	END CAPS (Set 2 pce.)	PLASTIC	W	600-eek202w	1,30	👍		
	END CAPS (Set 2 pce.)	PLASTIC	S	600-eek202b	1,30	👍		
	END CAPS (Set 2 pce.)	PLASTIC	S	600-eek202s	1,30	👍		
	PRODUCT	MATERIAL	COLOUR	CODE	EURO	STOCK		
	COVER	PMMA SATINED	WO	600-c202	5,20	👍		
	PRODUCT	MATERIAL	COLOUR	CODE	EURO	STOCK		
	MOUNTING CLIPS (2 pce.)	STAINLESS STEEL	E	600-emc202	1,00	👍		
	PRODUCT	MATERIAL	COLOUR	CODE	EURO	STOCK		

Recessed profile MINI 14 for flexible LED stripes up to width 8mm, INFO: for Led stripes up to max. 9 Watt, mounting depth: 15mm, cutout: width 16mm, when using end caps: add +4mm to profile length

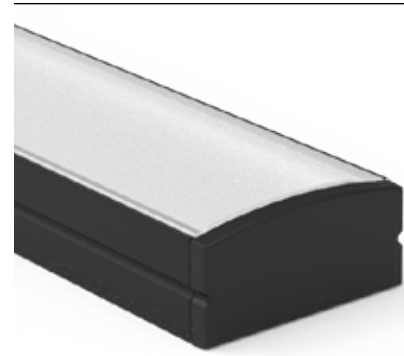
MINI 17 RECESSED

DETAIL	PRODUCT	L	W	H	COLOUR	CODE	EURO	STOCK
	PROFILE	2000	24	9	W	600-e203w	16,00	👍
	PROFILE	2000	24	9	S	600-e203b	16,00	👍
	PROFILE	2000	24	9	AE	600-e203s	15,00	👍
	PRODUCT	MATERIAL	COLOUR	CODE	EURO	STOCK		
	END CAPS (Set 2 pce.)	PLASTIC	W	600-eek203w	1,40	👍		
	END CAPS (Set 2 pce.)	PLASTIC	S	600-eek203b	1,40	👍		
	END CAPS (Set 2 pce.)	PLASTIC	S	600-eek203s	1,40	👍		
	PRODUCT	MATERIAL	COLOUR	CODE	EURO	STOCK		
	COVER	PMMA SATINED	WO	600-c203	5,80	👍		
	PRODUCT	MATERIAL	COLOUR	CODE	EURO	STOCK		
	MOUNTING CLIPS (2 pce.)	STAINLESS STEEL	E	600-mc203	1,30	👍		
	PRODUCT	MATERIAL	COLOUR	CODE	EURO	STOCK		

Recessed profile MINI 17 for flexible LED stripes up to width 12mm, INFO: for Led stripes up to max. 18 Watt, mounting depth: 11mm, cutout: width 19mm, when using end caps: add +4mm to profile length

SURFACE PROFILE FOR LED STRIPES FROM ALUMINIUM

MIDI SURFACE



Surface mounted profile MIDI for flexible LED stripes up to width 15mm, INFO: for Led stripes up to max. 28 Watt

DETAIL	PRODUCT	L	W	H	COLOUR	CODE	EURO	STOCK
	PROFILE	2000	23	11,2	W	600-a204w	15,00	👍
	PROFILE	2000	23	11,2	S	600-a204b	15,00	👍
	PROFILE	2000	23	11,2	AE	600-a204s	14,00	👍
	PRODUCT		MATERIAL		COLOUR	CODE	EURO	STOCK
	END CAPS (Set 2 pce.)	PLASTIC			W	600-aek204w	1,50	👍
	END CAPS (Set 2 pce.)	PLASTIC			S	600-aek204b	1,50	👍
	END CAPS (Set 2 pce.)	PLASTIC			S	600-aek204s	1,50	👍
	PRODUCT		MATERIAL		COLOUR	CODE	EURO	STOCK
	COVER	PMMA SATINED			WO	600-c204	7,80	👍
	COVER	PMMA CLEAR			K	600-ck204	8,10	👍
	PRODUCT		MATERIAL		COLOUR	CODE	EURO	STOCK
	MOUNTING CLIPS (2 pce.)	STAINLESS STEEL			E	600-mc204	1,30	👍

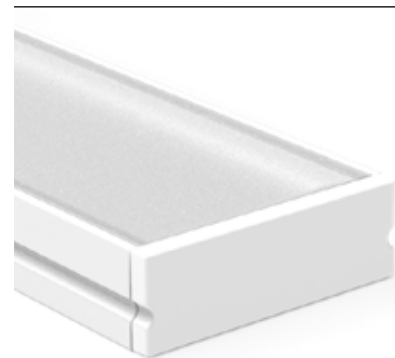
MAXI SURFACE



Surface mounted profile MAXI for flexible LED stripes up to width 15mm, INFO: for Led stripes up to max. 28 Watt

DETAIL	PRODUCT	L	W	H	COLOUR	CODE	EURO	STOCK
	PROFILE	2000	23	25	W	600-a205w	22,00	👍
	PROFILE	2000	23	25	S	600-a205b	22,00	👍
	PROFILE	2000	23	25	AE	600-a205s	21,00	👍
	PRODUCT		MATERIAL		COLOUR	CODE	EURO	STOCK
	END CAPS (Set 2 pce.)	PLASTIC			W	600-aek205w	2,00	👍
	END CAPS (Set 2 pce.)	PLASTIC			S	600-aek205b	2,00	👍
	END CAPS (Set 2 pce.)	PLASTIC			S	600-aek205s	2,00	👍
	PRODUCT		MATERIAL		COLOUR	CODE	EURO	STOCK
	END CAPS (Set 2 pce.)	PLASTIC (H 25mm)			W	600-aekc205w	2,50	👍
	END CAPS (Set 2 pce.)	PLASTIC (H 25mm)			S	600-aekc205b	2,50	👍
	END CAPS (Set 2 pce.)	PLASTIC (H 25mm)			S	600-aekc205s	2,50	👍
	PRODUCT		MATERIAL		COLOUR	CODE	EURO	STOCK
	COVER FLAT	PMMA SATINED			WO	600-c205	8,20	👍
	COVER CUBIC	PMMA SATINED			WO	600-cu205	17,00	👍
	PRODUCT		MATERIAL		COLOUR	CODE	EURO	STOCK
	MOUNTING CLIPS (2 pce.)	STAINLESS STEEL			E	600-amc205	1,50	👍

MEGA SURFACE



Surface mounted profile MEGA for flexible LED stripes up to width 15mm, INFO: for Led stripes up to max. 28 Watt

DETAIL	PRODUCT	L	W	H	COLOUR	CODE	EURO	STOCK
	PROFILE	2000	30	10,1	W	600-a206w	18,00	👍
	PROFILE	2000	30	10,1	S	600-a206b	18,00	👍
	PROFILE	2000	30	10,1	AE	600-a206s	17,00	👍
	PRODUCT		MATERIAL		COLOUR	CODE	EURO	STOCK
	END CAPS (Set 2 pce.)	PLASTIC			W	600-aek206w	2,00	👍
	END CAPS (Set 2 pce.)	PLASTIC			S	600-aek206b	2,00	👍
	END CAPS (Set 2 pce.)	PLASTIC			S	600-aek206s	2,00	👍
	PRODUCT		MATERIAL		COLOUR	CODE	EURO	STOCK
	COVER	PMMA SATINED			WO	600-c206	9,90	👍
	PRODUCT		MATERIAL		COLOUR	CODE	EURO	STOCK
	MOUNTING CLIPS (2 pce.)	STAINLESS STEEL			E	600-amc206	1,50	👍

RECESSED PROFILE FOR LED STRIPES FROM ALUMINIUM

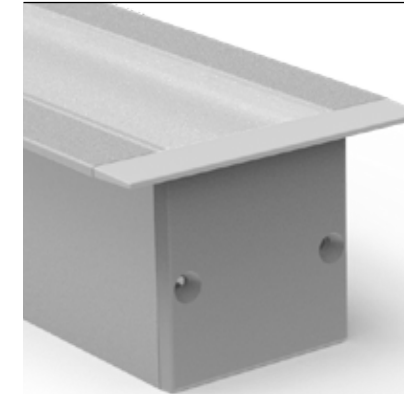
MIDI RECESSED



Recessed profile MIDI for flexible LED stripes up to width 15mm, INFO: for Led stripes up to max. 28 Watt, mounting depth: 15mm, cutout: width 24mm, when using end caps: add +4mm to profile length

DETAIL	PRODUCT	L	W	H	COLOUR	CODE	EURO	STOCK
	PROFILE	2000	30	11,2	W	600-e204w	17,00	👍
	PROFILE	2000	30	11,2	S	600-e204b	17,00	👍
	PROFILE	2000	30	11,2	AE	600-e204s	16,00	👍
	PRODUCT		MATERIAL		COLOUR	CODE	EURO	STOCK
	END CAPS (Set 2 pce.)	PLASTIC			W	600-eek204w	1,60	👍
	END CAPS (Set 2 pce.)	PLASTIC			S	600-eek204b	1,60	👍
	END CAPS (Set 2 pce.)	PLASTIC			S	600-eek204s	1,60	👍
	PRODUCT		MATERIAL		COLOUR	CODE	EURO	STOCK
	COVER	PMMA SATINED			WO	600-c204	7,80	👍
	COVER	PMMA CLEAR			K	600-ck204	7,80	👍
	PRODUCT		MATERIAL		COLOUR	CODE	EURO	STOCK
	MOUNTING CLIPS (2 pce.)	STAINLESS STEEL			E	600-mc204	1,30	👍

MAXI RECESSED



Recessed profile MAXI for flexible LED stripes up to width 15mm, INFO: for Led stripes up to max. 28 Watt, mounting depth: 28mm, cutout: width 24mm, when using end caps: add +4mm to profile length

DETAIL	PRODUCT	L	W	H	COLOUR	CODE	EURO	STOCK
	PROFILE	2000	37	25	W	600-e205w	25,00	👍
	PROFILE	2000	37	25	S	600-e205b	25,00	👍
	PROFILE	2000	37	25	AE	600-e205s	24,00	👍
	PRODUCT		MATERIAL		COLOUR	CODE	EURO	STOCK
	END CAPS (Set 2 pce.)	PLASTIC			W	600-eek205w	2,20	👍
	END CAPS (Set 2 pce.)	PLASTIC			S	600-eek205b	2,20	👍
	END CAPS (Set 2 pce.)	PLASTIC			S	600-eek205s	2,20	👍
	PRODUCT		MATERIAL		COLOUR	CODE	EURO	STOCK
	END CAPS (Set 2 pce.)	PLASTIC (H 25mm)			W	600-eekc205w	2,70	👍
	END CAPS (Set 2 pce.)	PLASTIC (H 25mm)			S	600-eekc205b	2,70	👍
	END CAPS (Set 2 pce.)	PLASTIC (H 25mm)			S	600-eekc205s	2,70	👍
	PRODUCT		MATERIAL		COLOUR	CODE	EURO	STOCK
	COVER FLAT	PMMA SATINED			WO	600-c205	8,20	👍
	COVER CUBIC	PMMA SATINED			WO	600-cu205	17,00	👍
	PRODUCT		MATERIAL		COLOUR	CODE	EURO	STOCK
	MOUNTING CLIPS (2 pce.)	STAINLESS STEEL			E	600-emc205	6,00	👍

CORNER PROFILES FOR LED STRIPES FROM ALUMINIUM

MIDI CORNER SURFACE

DETAIL	PRODUCT	L	W	H	COLOUR	CODE	EURO	STOCK
	PROFILE	2000	16	16	W	600-a207w	12,00	👍
	PROFILE	2000	16	16	S	600-a207b	12,00	👍
	PROFILE	2000	16	16	AE	600-a207s	11,00	👍
	PRODUCT	MATERIAL	COLOUR	CODE	EURO	STOCK		
	END CAPS (Set 2 pce.)	PLASTIC	W	600-ae207w	1,30	👍		
	END CAPS (Set 2 pce.)	PLASTIC	S	600-ae207b	1,30	👍		
	PRODUCT	MATERIAL	COLOUR	CODE	EURO	STOCK		
	COVER	PMMA SATINED	WO	600-c207	8,00	👍		
	PRODUCT	MATERIAL	COLOUR	CODE	EURO	STOCK		
	PRODUCT	MATERIAL	COLOUR	CODE	EURO	STOCK		
	MOUNTING CLIPS (2 pce.)	STAINLESS STEEL	E	600-amc207	1,10	👍		

Surface mounted profile MIDI CORNER for flexible LED stripes up to width 8mm, INFO: for Led stripes up to max. 18 Watt

MAXI CORNER SURFACE

DETAIL	PRODUCT	L	W	H	COLOUR	CODE	EURO	STOCK
	PROFILE	2000	30	30	W	600-a208w	22,00	👍
	PROFILE	2000	30	30	S	600-a208b	22,00	👍
	PROFILE	2000	30	30	AE	600-a208s	21,00	👍
	PRODUCT	MATERIAL	COLOUR	CODE	EURO	STOCK		
	END CAPS (Set 2 pce.)	PLASTIC	W	600-ae208w	1,50	👍		
	END CAPS (Set 2 pce.)	PLASTIC	S	600-ae208b	1,50	👍		
	PRODUCT	MATERIAL	COLOUR	CODE	EURO	STOCK		
	COVER	PMMA SATINED	WO	600-c208	15,00	👍		
	PRODUCT	MATERIAL	COLOUR	CODE	EURO	STOCK		
	PRODUCT	MATERIAL	COLOUR	CODE	EURO	STOCK		
	MOUNTING CLIPS (2 pce.)	STAINLESS STEEL	E	600-amc208	1,90	👍		

Surface mounted profile MAXI CORNER for flexible LED stripes up to width 15mm, INFO: for Led stripes up to max. 28 Watt

ACCESSORIES

ALUMINIUM STRIPS

PRODUCT	L	W	H	COLOUR	CODE	EURO	STOCK
ALUMINIUM STRIP	1000	10	3	AN	600-1000	5,00	👍
ALUMINIUM STRIP WITH DRILL HOLES	1000	10	3	AN	600-1000b	9,00	👍
PRODUCT	L	B	H	COLOUR	CODE	EURO	STOCK
ALUMINIUM STRIP	3000	10	3	AN	600-3000	14,00	👍
ALUMINIUM STRIP WITH DRILL HOLES	3000	10	3	AN	600-3000b	27,00	👍

RIDE PROFILES FOR LED STRIPES

RIDE SURFACE PROFILE

INFO	PRODUCT	L	W	H	COLOUR	CODE	EURO	STOCK
 Surface mounted profile RIDE made of extruded aluminium, for flexible LED stripes, available colours: anodised aluminium, black or white powder-coated order end caps and covers separately	PROFILE	2000	35	35	W	577-125leer	49,00	👍
	PROFILE	2000	35	35	S	577-126leer	49,00	👍
	PROFILE	2000	35	35	AE	577-128leer	49,00	👍
	PRODUCT	FOR	COLOUR	CODE	EURO	STOCK		
	END CAPS (Set 2 pce.)	COVER FLAT	W	577-4605	29,00	👍		
	END CAPS (Set 2 pce.)	COVER FLAT	S	577-4606	29,00	👍		
	END CAPS (Set 2 pce.)	COVER FLAT	S	577-4604	29,00	👍		
	PRODUCT	FOR	COLOUR	CODE	EURO	STOCK		
	END CAPS (Set 2 pce.)	COVER CUBIC	W	577-4625	36,00	👍		
END CAPS (Set 2 pce.)	COVER CUBIC	S	577-4626	36,00	👍			
END CAPS (Set 2 pce.)	COVER CUBIC	S	577-4624	36,00	👍			

RIDE RECESSED PROFILE


INFO	PRODUCT	L	W	H	ET	COLOUR	CODE	EURO	STOCK
 Recessed profile RIDE made of extruded aluminium, for flexible LED stripes, available colours: anodised aluminium, black or white powder-coated order end caps and covers separately, mounting depth: 75mm, cutout: width 37mm, profile length less -3mm, Only flat cover possible!	PROFIL	2000	44	35	75	W	577-225leer	49,00	👍
	PROFIL	2000	44	35	75	S	577-226leer	49,00	👍
	PROFIL	2000	44	35	75	AE	577-228leer	49,00	👍
	PRODUCT	FOR	COLOUR	CODE	EURO	STOCK			
	END CAPS (Set 2 pce.)	COVER FLAT	W	577-4705	15,00	👍			
	END CAPS (Set 2 pce.)	COVER FLAT	S	577-4706	15,00	👍			
	END CAPS (Set 2 pce.)	COVER FLAT	S	577-4704	15,00	👍			
	PRODUCT	FOR	COLOUR	CODE	EURO	STOCK			
	MOUNTING SET			577-5000	6,00	👍			

COVERS FOR RIDE PROFIL


INFO	PRODUCT	L	W	H	COLOUR	CODE	EURO	STOCK
 opal cover in PMMA, for recessed profile RIDE, please order only flat cover	COVER FLAT	2000	35	2	WO	577-20pm	29,00	👍
	COVER CUBIC	2000	35	35	WO	577-20pmk	49,00	👍

CONNECTORS FOR RIDE PROFIL


PRODUCT	CODE	EURO	STOCK
LINEAR CONNECTOR	577-4300	7,00	👍
CORNER CONNECTOR FOR HORIZONTAL LIGHT SOLUTIONS	577-4400	10,00	👍
CORNER CONNECTOR FOR VERTICAL LIGHT SOLUTIONS	577-4410	13,00	👍

LED CONVERTER VST	INFO	W	V DC	L	W	H	COLOUR	CODE	EURO	STOCK
 <small>Symbolic picture</small>	LED converter for LED stripes, not dimmable, 230 V AC	50	24	225	60	36	W	24-122752	75,00	
		70	24	225	60	36	W	24-122750	93,00	
		150	24	240	60	49	S	24-122754n	98,00	




LED CONVERTER EFU	INFO	W	V DC	L	W	H	COLOUR	CODE	EURO	STOCK
 <small>Symbolic picture</small>	LED converter for LED stripes, not dimmable, 230 V AC	25	24	146	55	19	W	24-122322	20,00	




LED CONVERTER VSTR 1-10V / PUSH / IR	INFO	W	V DC	L	W	H	COLOUR	CODE	EURO	STOCK
 <small>Symbolic picture</small>	LED converter for LED stripes, dimmable 1-10V & Push Dimm., order IR accessories separately	3 x 40W RGB 1 x 100W white	24	240	60	49	W	24-122730	149,00	




LED CONVERTER ST2 IP67	INFO	W	V DC	L	W	H	COLOUR	CODE	EURO	STOCK
 <small>Symbolic picture</small>	LED Konverter für LED Strips, nicht dimmbar, 230 V AC	70	24	225	66	51	S	24-122479	99,00	
		150	24	225	66	51	S	24-122511	214,00	




DIMMER FOR RGB-LED, DMX 512 OR DALI	INFO	V DC	L	W	H	COLOUR	CODE	EURO	STOCK
 <small>Symbolic picture</small>	Dimmer for LED-RGB stripes 12-24V DC, Attention: order 12V DC or 24V DC converter separately Control input 1 suitable for DALI Control input 2 suitable for DMX 512 Input 12-24V DC / output 3 x 12-24V dimm., max. load 2A per channel	24	110	70	23	W	75-dmx200	42,00	




DMX RGBW LED DIMMER	INFO	V DC	L	W	H	COLOUR	CODE	EURO	STOCK
 <small>Symbolic picture</small>	RGBW LED dimmer DMX 12-36V, 12V - 36V DC, suitable to control RGBW LED stripes, max. load 5A per channel	12-36	178	46	18	W	711-000705	105,00	

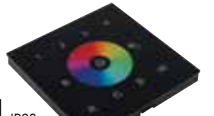


UNIVERSAL DIMMER	INFO	V DC	L	W	H	COLOUR	CODE	EURO	STOCK
 <small>Symbolic picture</small>	Universal dimmer 1 channel, separate control input for DALI, 1-10V, Push. Sync connection for up to 9 slaves at 1-10V and Push control, max. connection: 5A, order strain relief separately.	12-50	153	30	21	W	322-ud3000	99,00	
		STRAIN RELIEF for 1-channel universal dimmer, 2 pieces							322-ud7001




RGBW RADIO DIMMER	INFO	W	V DC	L	W	H	COLOUR	CODE	EURO	STOCK
 <small>Symbolic picture</small>	4-channel RGBW radio dimmer for control of RGBW, RGB or white LED stripes, max. load 5A per channel, order power supply separately	240-720W	12-36	179	46	19	W	711-000305	130,00	





LED LIGHT SCENES CONTROLLER	INFO	FOR	V DC	L	W	T	COLOUR	CODE	EURO	STOCK
 <small>Symbolic picture</small>	RGBW radio controller for up to 4 zones, up to 4 scenes, speed and brightness can be adjusted, control can be mounted in standard recessed housing 68mm	DMX	12-24	86	86	10	S	711-000806	140,00	
		WIFI / RADIO	12-24	86	86	10	S	711-000606	120,00	




WLAN GATEWAY	INFO	V DC	L	W	H	COLOUR	CODE	EURO	STOCK
 <small>Symbolic picture</small>	WLAN gateway, for the control of 711-000305, corresponding App EASYColor Pro available free of charge in the Appstore or Playstore integration into in-house wlan possible.	12-24	110	85	24,2	S	711-000406	105,00	




REMOTE CONTROL	INFO	L	W	H	COLOUR	CODE	EURO	STOCK
 <small>Symbolic picture</small>	Radio remote control for up to 4 zones, up to 4 scenes, speed and brightness can be adjusted, incl. wall fixation	140	48	16	S	711-000506	135,00	

RGB LED CONTROLLER	INFO	V DC	L	W	H	COLOUR	CODE	EURO	STOCK
 <small>Symbolic picture</small>	2.4GHz RGBW radio controller 12-24V with touch remote control, max. scope 30m, suitable for control of RGBW LED stripes, functions via remote control: monochrome using colour wheel, white, 15 colour profiles, dimming functions (9 levels), memory function, output current max. 24A (4 x 6A)	12-24	85	45	27	W	354-con1001	95,00	




ZIGBEE 3.0 RGBW DIMMER	INFO	W	V DC	L	W	H	COLOUR	CODE	EURO	STOCK
 <small>Symbolic picture</small>	4-channel ZigBee 3.0 dimmer for control of RGBW, RGB or white LED stripes, max. load 5A per channel, order power supply separately	240 - 720	12-36	165	53	23	W	711-000005	130,00	



ZIGBEE 3.0 LIGHT SCENES CONTROLLER	INFO	V DC	L	W	T	COLOUR	CODE	EURO	STOCK
 <small>Symbolic picture</small>	ZigBee 3.0 controller for up to 4 zones, up to 4 scenes, speed and brightness can be adjusted, max. 30 ZigBee dimmer, max. scope 30m on open field, control can be mounted in standard recessed housing 68mm	220 - 240	86	86	10	W	711-000105	120,00	



ZIGBEE 3.0 RGB REMOTE CONTROL	INFO	L	W	H	COLOUR	CODE	EURO	STOCK
 <small>Symbolic picture</small>	ZigBee 3.0 remote control for up to 4 zones, up to 4 scenes, speed and brightness can be adjusted, max. 30 ZigBee dimmer, max. scope 30m on open field, incl. wall fixation	120	55	17	S	711-000206	100,00	